



MÜHLER

small domestic appliances
2025



Bread Maker MBM-1509

Art. Number: 1004089

- Capacity - 1000 g / 1250 g / 1500 g
- Cool touch housing
- Transparent window
- LCD display
- 15 programs - Basic, French, Whole grain, Sweet, Dairy-buttered bread, Gluten free, Quick, Cake, Stirring, Dough, Pasta dough, Yoghurt, Marmalade, Baking, Home-made bread (manual setting)
- 2 agitators for greater kneading efficiency
- Non-stick coating baking pan with agitator
- Setting the baking level - Light, Medium and Dark
- Automated maintenance of warm bread - 1 hour
- Delayed start up to 15 hours
- Sound signal
- Accessories - measuring cup, measuring spoon and hook
- 850W, 220-240V / 50-60 Hz



Pcs / Ctn: 2
CARTON: 45.5x59.5x37 cm

GIFT BOX HxWxD:
44x35.5x29 cm



Bread Maker MBM-1502

Art. Number: 650585

- Capacity - 1000 g / 1250 g / 1500 g
- Cool touch housing
- Transparent window
- LCD display
- 15 programs - Basic, French, Whole grain, Sweet, Dairy-buttered bread, Gluten free, Quick, Cake, Stirring, Dough, Pasta dough, Yoghurt, Marmalade, Baking, Home-made bread (manual setting)
- 2 agitators for greater kneading efficiency
- Non-stick coating baking pan with agitator
- Setting the baking level - Light, Medium and Dark
- Automated maintenance of warm bread - 1 hour
- Delayed start up to 15 hours
- Sound signal
- Accessories - measuring cup, measuring spoon and hook
- 850W, 220-240V / 50-60 Hz



Pcs / Ctn: 2
CARTON: 59.5x45.5x35 cm

GIFT BOX HxWxD:
29x44x33.5 cm



Air Fryer MFX-515

NEW

Art. Number: 1008795

- New slim design to saves countertop space and gives more cooking volume
- Total / working volume – 5 L / 4,6 L
- Temperature control – 80 to 200 degrees
- Non-stick coated basket and tray
- Cool-touch body
- 60-minute timer
- Colored touch LED control display
- 8 preliminary set cooking programs - French fries, Steak, Chicken, Sweet potato, Cake, Fish, Shrimp, Pizza, but also many other options as per your imagination
- Energy efficient, healthy, rapid, easy and fat-free meals preparation with outstanding taste and aroma
- Stainless steel heater
- Observation window
- Cavity lighting with 30 seconds auto shut-off
- Standby/Pause function
- Idle 3-minute auto shut-off
- Audible alarm
- Overheating protection
- Anti-slip rubber feet
- Power cord length – 1 m
- 1500W, 220-240V / 50-60 Hz



Pcs / Ctn: 1
CARTON: 37x29x48 cm

GIFT BOX HxWxD:
36x28x47.2 cm



Grill Grate For Air Fryer MFXG-515

NEW

Art. Number: 1008798

- Suitable for the following models air fryers: MFX-515
- Wipe the surface and the edges of the baking tray with kitchen roll, absorbent paper towel or a soft cloth
- Do not clean with any abrasive scouring pad, steel wool or sponge as this will damage the finish
- Use only water or recommended liquid to clean the appliance. Do not use any other chemical solution to clean the appliance
- Material: Aluminium



Pcs / Ctn: 50
CARTON: 26x38x26.8 cm

GIFT BOX HxWxD:
1x18.5x25.8 cm



Air Fryer MFX-815

NEW

Art. Number: 1008796

- New slim design to saves countertop space and gives more cooking volume
- Total / working volume – 8 L / 7.6 L
- Temperature control – 80 to 200°C
- Non-stick coated basket and tray
- Stainless steel heater
- Cool-touch body
- 60-minute timer
- Colored touch LED control display
- 7 preliminary set cooking programs - Fries, Steak, Chicken, Cake, Fish, Shrimp, Pizza, but also many other options as per your imagination
- Energy efficient, healthy, rapid, easy and fat-free meals preparation with outstanding taste and aroma
- Shake function notification
- Observation window
- Cavity lighting with 60-seconds auto shut-off
- Standby/ Pause function
- Idle 5-minute auto shut-off
- Countdown of the last 60 seconds of the selected program
- Audible alarm
- Overheating protection
- Anti-slip rubber feet
- Power cord length – 1 m
- 1700W, 220-240V / 50-60 Hz



Pcs / Ctn: 1
CARTON: 38x34x52.5 cm

GIFT BOX HxWxD:
35x32.5x51 cm



3 800139 221676

Grill Grate For Air Fryer MFXG-815

NEW

Art. Number: 1008799

- Suitable for the following models air fryers: MFX-815
- Wipe the surface and the edges of the baking tray with kitchen roll, absorbent paper towel or a soft cloth
- Do not clean with any abrasive scouring pad, steel wool or sponge as this will damage the finish
- Use only water or recommended liquid to clean the appliance. Do not use any other chemical solution to clean the appliance
- Material: Aluminum



Pcs / Ctn: 50
CARTON: 36x44.2x31 cm

GIFT BOX HxWxD:
1.4x21.6x30.4 cm



3 800139 221690

Air Fryer MFX-414M

Art. Number: 1008802

- Cooking pot volume -5 L
- Capacity - 4.2 L (with rack)
- Cooking pot size: 239x228x97.5 mm
- Metal grid size: 226x215 mm
- Non-stick coating
- Timer - 60 min.
- Rotary temperature control
- Rotary timer
- Temperature regulator range 80-200°C
- Automatic restart of the cooking after opening the tank
- Signal for end of the cooking
- Non-slip rubber feet
- 1500W, 220-240V / 50-60 Hz

NEW



Pcs / Ctn: 2
CARTON: 34.2x62.7x32.1 cm

GIFT BOX HxWxD:
33x30.6x30.6 cm



3 800139 223250

Air Fryer MFX-415D

Art. Number: 1008803

- Cooking pot volume -5 L
- Capacity - 4.2 L (with rack)
- Cooking pot size: 239x228x97.5 mm
- Metal grid size: 226x215 mm
- Non-stick coating
- Timer - 60 min.
- Ready cooking menus - Chicken drumstick, Steak, Fish, Dessert, Vegetables, French fries, Shrimp
- Temperature regulator range 80-200°C
- Automatic restart of the cooking after opening the tank
- LED display
- Large touch screen control
- Signal for end of the cooking
- Non-slip rubber feet
- 1500W, 220-240V / 50-60 Hz

NEW



Pcs / Ctn: 2
CARTON: 34.2x62.7x32.1 cm

GIFT BOX HxWxD:
33x30.6x30.6 cm



3 800139 223274

Compact Halogen Oven And Air Fryer 2in1 MFC-1200

Art. Number: 1008269

- Volume - 12 L
- Cooks the food 3 times faster, which cuts energy use by up to 45% compared to conventional ovens
- Preserves the food vitamins and uses a minimum amount of fat
- Can be used for – roasting meat, baking pastries, frying, defrosting, grilling, stewing and warming
- Temperature control - up to 250°C
- Heat-resistant bowl with ø333 mm, made of glass with a 6 mm thickness
- Control panel
- 60-minute audible timer
- Thermally insulated handles
- Handle for easy portability
- Self-cleaning function
- Light indicators
- Accessories: Baking racks (small / large), Tongs for removing the racks
- 1200-1400W, 220-240V / 50-60 Hz



Pcs / Ctn: 2
CARTON: 74x37.5x25 cm

GIFT BOX HxWxD:
36x36x23 cm



3 800139 242626

Deep Fryer DF-3030IX

Art. Number: 1002688

- Capacity - 3.0 L
- Enamelled demountable frying pan
- Stainless steel housing
- Temperature control from 90 to 190°C
- Light indicator
- Rubber anti-slip feet
- 2000W, 220-240V / 50-60 Hz



Pcs / Ctn: 4
CARTON: 85.5x26x53 cm

GIFT BOX HxWxD:
42x24x25.5 cm



3 800139 274597

Electric Pressure Multicooker MLC-6050P

Art. Number: 1006604

- Total / Working volume – 6 L / 5 L
- Cooking with up to 3 times lower pressure (35 kPa) compared to a conventional pressure cooker (100 kPa) while retaining the vitamins and nutrients in the food
- Saving time and energy thanks to reduced cooking times
- Stainless steel housing
- 16 default cooking programs – Rice, Pre-set, Chicken / Lobster, Beef / Mutton, Fish, Soup, Bean / Tendon, Heating / Fry, Stew, Pork, Cake, Hot pot, Yoghurt, Steam, Frozen meat, Porridge
- Digital display
- Touch control panel
- 24-hour delayed start function
- 24-hour keep warm function
- Taste selection function – light, standard and rich
- Time cooking control
- Automatic keep warm function
- Cancel function
- High pressure protection systems: Pressure regulator system
- Discharge pressure component
- Accessories: measuring cup, rice spoon and a steamer
- 1000-1200W, 220-240V / 50-60 Hz



Pcs / Ctn: 2
CARTON: 34x34x76 cm

GIFT BOX HxWxD:
32x32x36.8 cm



3 800139 209674

Electric Multicooker MLC-5020

Art. Number: 1005508

- Total / Working volume – 5 L / 4 L
- Stainless steel housing and lid decoration
- Inner pot with non-sticking coating
- 20 default cooking programs – Fry, Milk porridge, Steam, Soup, Stew, Bake, Yoghurt, Cake, Slow cook, Pilaf, Saute, Soaked rice, Pasta, Meat, Dumpling, Pizza, Cheesecake, Sterilization, Buckwheat porridge, "Do it yourself" meal
- LED display
- Digital control panel
- 24-hour delayed start function
- 12-hour keep warm function
- Reheat and Stop cooking functions
- Time and temperature cooking control
- Power shortage memory function
- Double overheating protection system
- Accessories: measuring cup, rice spoon and steamer
- 930W, 220-240V / 50-60 Hz



Pcs / Ctn: 4
CARTON: 64x30.5x60 cm

GIFT BOX HxWxD:
29x29x31 cm



Electric Multicooker MLC-5045

Art. Number: 1005509

- Total / Working volume – 5 L / 4 L
- Stainless steel housing and lid decoration
- Inner pot with non-sticking coating
- 45 default cooking programs – Rice, Fry, Milk porridge, Steam, Cottage cheese, Soup, Stew, Bake, Yoghurt, Cake, Slow cook, Pilaf, Sausages, Saute, Soaked rice, Pasta, Meat, Oatmeal, Hot wine, Dumpling, Pizza, Baked milk, Steak, Broth, Sterilization, Jam, Congee, Baked pork, Compote, Vegetables, Wine, Sauce, Biscuit, Buckwheat porridge, Souffle, Noodle, Crust, Bread, Fast cook, Pancakes, Brown rice, Seafood, Beans, "Do it yourself" meal
- LED display
- Digital control panel
- 24-hour delayed start function
- 12-hour keep warm function
- Express, Reheat and Stop cooking functions
- Time and temperature cooking control
- Power shortage memory function
- Double overheating protection system
- Accessories: measuring cup, rice spoon and steamer
- 930W, 220-240V / 50-60 Hz



Pcs / Ctn: 4
CARTON: 65x31x61 cm

GIFT BOX HxWxD:
29x29x31 cm



Inner Pot For Multicooker IPM24

Art. Number: 1008819

- Suitable for the following models multicookers: MLC-6050P
- After use and before cleaning, remove the plug from the socket and wait for the appliance to cool down
- Wipe the inside and the edges of the vessel with kitchen roll, absorbent paper towel or a soft cloth
- Wipe the outside with only a slightly moistened cloth
- Do not clean the inside and outside surface with any abrasive scouring pad or steel wool as this will damage the finish
- Use only water or recommended liquid to clean the vessel. Do not use any chemical solution to clean the appliance
- Material: Aluminium alloy with non-stick coating

NEW



Pcs / Ctn: 18
CARTON: 73x70x25 cm

GIFT BOX HxWxD:
16.2x24.1x24.1 cm



Espresso Maker 3in1 MCM-611

Art. Number: 1007047

- 20 Bar powerful Italian pressure pump
- 0.9 L detachable water tank
- Multi capsule system for Nespresso, Dolce Gusto and ground coffee
- LED light indicators
- 7 volume levels with touch control
- On/Off button
- Drip tray for easy cleaning
- 9 minutes stand by
- Compact saving space design
- *The device works with capsules that are sold under trademarks that do not belong and are not related to Keten OOD
- 1400W, 220-240V / 50-60 Hz



Ground coffee

NESPRESSO

NESPRESSO
Dolce Gusto



Pcs / Ctn: 4
CARTON: 57x33x29 cm

GIFT BOX HxWxD:
26.5x31.3x14 cm



Espresso Maker 3in1 MCM-601

Art. Number: 1009208

- 20 Bar Italian pressure pump
- 0.9 L detachable water tank
- Multi capsule system for Nespresso, Dolce Gusto, and ground coffee – included in the set
- On/Off button
- Drip tray for easy cleaning
- 9-minute stand by mode
- Compact design
- *The device works with capsules that are sold under trademarks that do not belong and are not related to Keten OOD
- 1400W, 220-240V / 50-60 Hz



Ground coffee

NESPRESSO

NESPRESSO
Dolce Gusto

NEW



Pcs / Ctn: 4
CARTON: 53x44x35.8 cm

GIFT BOX HxWxD:
25.5x21.5x33.8 cm



Espresso Maker MCM-1583

Art. Number: 1003527

- Permanent powerful pressure pump (15 bar)
- 1.8 L detachable water tank
- Dual stainless steel filter for espresso with perfect aroma, taste and cream
- Detachable steam nozzle to make cappuccino or hot drinks
- Light indicators for pump and steam readiness
- Overheating and overpressure protection
- Detachable drip tray for easy cleaning
- Automatic turn off - 25 min. max
- Accessories: Filter holder handle, Dual ground coffee filter, Spoon with tamper
- 925W, 220-240V / 50-60 Hz

Pcs / Ctn: 2
CARTON: 58.6x35.8x29.8 cm

GIFT BOX HxWxD:
32.8x28x28 cm



Espresso Maker MCM-1587

Art. Number: 1001800

- Permanent powerful pressure pump (15 bar)
- 1.8 L detachable water tank
- Dual stainless steel filter for espresso with perfect aroma, taste and cream
- Stainless steel panel
- Detachable steam nozzle to make cappuccino or hot drinks
- Light indicators for ready pump and steam
- Overheating and overpressure protection
- Detachable drip tray for easy cleaning
- Automatic turn off - 9 min.
- Accessories: Filter holder handle, Dual ground coffee filter,
- Spoon with tamper, ESE coffee pod bag filter
- 850W, 220-240V / 50-60 Hz

Pcs / Ctn: 2
CARTON: 60x30X36 cm

GIFT BOX HxWxD:
28x28x32.8 cm



Espresso Coffee Machine MCM-33

Art. Number: 1009101

- Pressure pump 3.5 Bar
- Capacity - 0,24 L
- Indicator lights
- Milk frother
- Drip tray for easy cleaning
- Measuring spoon
- Compact design
- 800W, 220-240 V / 50-60 Hz

NEW

Pcs / Ctn: 4
CARTON: 53x44X35.8 cm

GIFT BOX HxWxD:
25.5x21.5x33.8 cm



Espresso Maker MCM-99H

Art. Number: 1008407

- Up to 8 bars pressure without electricity
- Aromatic coffee with minimal effort
- Coffee filter with stainless steel grid
- Coffee measuring scoop - 7 g
- Water measuring cup - 80 ml
- Coffee cup - 70 ml
- Convenient and easy to use wherever you are
- Extremely light - only 500 g
- Manual use, no batteries or electrical power
- Perfect for hiking, camping, on the road or in the office

Pcs / Ctn: 24
CARTON: 47x41.8X22 cm

GIFT BOX HxWxD:
22.8x9x9 cm



Drip Coffee Maker MCM-1080

Art. Number: 1001336

- Capacity - 4-6 cups of coffee
- Anti-drip system
- Transparent water tank
- Removable filter
- "Keep warm" function
- On/Off button
- Light indicator
- 600W, 220-240V / 50-60 Hz

Pcs / Ctn: 8
CARTON: 29x40X64 cm

GIFT BOX HxWxD:
18.8x15x25.6 cm



Coffee Grinder MCG-355

Art. Number: 1009210

- Suitable for: Grinding coffee, nuts, and herbs
- Grinding Capacity: 60 g
- Stainless steel blade
- Operating cycle: 45 seconds operation / 60 seconds rest
- Safety lock system
- Transparent lid
- Cord storage compartment
- 150W, 220-240V / 50-60 Hz



NEW

Pcs / Ctn: 4
CARTON: 22.8x22.2X20.5 cm

GIFT BOX HxWxD:
19x10.6x10.6 cm



Coffee Grinder MCG-335

Art. Number: 1001339

- Transparent lid
- Stainless steel blade
- Volume – 30 gr
- Safety operation system
- Anti-slip rubber feet
- 135W, 220-240V / 50-60 Hz



Pcs / Ctn: 4
CARTON: 27.7x28.1X23.5 cm

GIFT BOX HxWxD:
21x13x13 cm



Milk Frother MFF-44S

Art. Number: 1009212

- Capacity: 240 ml for frothed milk, 115 ml for warm milk, minimum quantity 75 ml
- Material: Stainless steel
- Easy preparation of Cappuccino, Latte, Iced coffee, Milk
- Creates rich, frothy foam for hot drinks with an attractive look and refined taste
- LED lights indicate selected function
- Cord storage compartment in the base
- Transparent protective lid
- Overheat protection
- 500W, 220-240V / 50-60 Hz



NEW

Pcs / Ctn: 1
CARTON: 38.8x25.5X31.5 cm

GIFT BOX HxWxD:
18.5x12x18 cm



Standing Frappe Mixer FMX-277S

Art. Number: 1009302

- Stainless steel stirrer with two frothing attachments
- Stainless steel bowl - 500 ml
- Easy cleaning
- 2 operating speeds
 - first speed: 18,000 RPM
 - second speed: 22,000 RPM.
- Cable length: 100 cm
- 100W, 220-240V / 50-60 Hz



NEW

Pcs / Ctn: 8
CARTON: 51.5x37.5X43.5 cm

GIFT BOX HxWxD:
18x13.8x40.4 cm



Standing Frappe Mixer FMX-100P

Art. Number: 1001664

- Stainless steel stirrer
- Plastic bowl - 450 ml
- Easy cleaning
- 2 speed settings
- 100W, 220-240V / 50-60 Hz



Pcs / Ctn: 8
CARTON: 41x37.5x53.5 cm

GIFT BOX HxWxD:
18x13x39 cm



Frappe Mixer FMX-255S

Art. Number: 1009301

- Ergonomic stainless steel body
- Exceptional efficiency during operation - 20,000 RPM ($\pm 15\%$)
- Flat stainless steel stirrer
- Easy to clean
- Measuring cup - 80 ml
- Power supply - 2xAA batteries (not included)
- On/Off button



Pcs / Ctn: 1
CARTON: 41x32.5x33 cm

GIFT BOX HxWxD:
31.2x5.5x20 cm



Manual Frappe Mixer FMX-252N

Art. Number: 1009317

- Ergonomic handle
- Stainless steel stirrer - 14.5 cm
- Easy cleaning
- Tempered cup - 80 ml
- 25W, 220-240V / 50-60 Hz

NEW



Pcs / Ctn: 1
CARTON: 34.5x30x31 cm

GIFT BOX HxWxD:
31.2x5.5x20 cm



Manual Frappe Mixer FMX-1220B

Art. Number: 1003723

- Wireless operation
- Comfortable grip
- Stainless steel stirrer - 12 cm
- Power supply - 2xAA batteries (not included)
- On/Off button



Pcs / Ctn: 72
CARTON: 60x29.5x27.5 cm

GIFT BOX HxWxD:
18x8x7 cm



Electric Kettle WK-179D

Art. Number: 1009379

- Cordless Electric Kettle
- Capacity: 1.5 liters
- 360° rotation on the base
- Double-wall stainless steel body with plastic casing
- On/Off button
- Boil-dry protection
- Automatic shut-off
- Light indicator for operation
- Cable storage compartment
- Anti-slip base design
- 1500-1800W, 220-240V/ 50-60 Hz

Pcs / Ctn: 8
CARTON: 53.9x76.8x21.2 cm

GIFT BOX HxWxD:
26.2x20.2x18.7 cm



NEW

Electric Kettle WK-177S

Art. Number: 1009378

- Cordless Electric Kettle
- Capacity: 2 liters
- 360° rotation on the base
- High quality 18/10 stainless steel body
- On/Off button
- Boil-dry protection
- Automatic shut-off
- Light indicator for operation
- Cable storage compartment
- Anti-slip base design
- 1850-2200W, 220-240V/ 50-60 Hz

Pcs / Ctn: 8
CARTON: 50x70.8x22.2 cm

GIFT BOX HxWxD:
24x17.2x21.2 cm



NEW

Electric Kettle WK-171

Art. Number: 1009377

- Cordless Electric Kettle
- Capacity: 1.7 liters
- 360° rotation on the base
- Automatic lid opening
- On/Off button
- Boil-dry protection
- Automatic shut-off
- Light indicator for operation
- Transparent water level scale
- Removable filter
- Cable storage compartment
- Anti-slip base design
- 1850-2200W, 220-240V/ 50-60 Hz

Pcs / Ctn: 8
CARTON: 47x72x21 cm

GIFT BOX HxWxD:
22.5x20x17.4 cm



NEW

Panniny Maker MHT-889S

Art. Number: 1003111

- Sandwich grill toaster
- Plates type "GRILL" with non-stick coating and deep ribbing
- Plate size - 23x14.3 cm
- Locking system
- On and Ready light indicators
- Automatic thermostat
- Anti-slip feet
- 850W, 220-240V / 50-60 Hz

Pcs / Ctn: 6
CARTON: 52.5x30.8x35.5 cm

GIFT BOX HxWxD:
25.5x30x11.2 cm



3 800139 277611

Contact Grill 2in1 MHT-2824

Art. Number: 1005055

- 2in1 Contact grill & Grill
- Non-stick plates for easy cleaning for 4 slices, grill type
- Plates size - 28x23.5 cm
- Stainless steel decorative panel
- Cool-touch stainless steel handle
- Adjustable temperature control
- Using Grill function in 180 degrees position
- 2 light indicators - Power and Heating
- Thermostatically controlled locking system
- Oil drip tray
- Anti-slip feet
- 2000W, 220-240V / 50-60 Hz



Pcs / Ctn: 6
CARTON: 71x38x50 cm

GIFT BOX HxWxD:
35x36x16 cm



Sandwich And Waffles Maker 2in1 MH-899D

Art. Number: 1005056

- 2 sets of non-stick cooking plates
- Detachable Grill and waffle plates
- Plates size 22.5x12.5 cm
- Cool-touch handle
- Stainless steel decorative panel
- Automatic temperature control
- 2 light indicators - power and heating
- Lock knob
- Anti-slip feet
- 750W, 220-240V / 50-60 Hz



Pcs / Ctn: 6
CARTON: 54x28x46 cm

GIFT BOX HxWxD:
25.5x30x14 cm



Sandwich Maker MHT-1444G

Art. Number: 1001330

- 4 big bread slices slots
- Non-stick plates type GRILL
- Plates dimensions: 25.4x21.5 cm
- Stainless steel decoration
- Cool touch housing
- Automatic temperature control
- Lid with safety lock
- Upright storage
- Light indicators
- Anti-slip feet
- 1400W, 220-240V / 50-60 Hz



Pcs / Ctn: 6
CARTON: 70.5x29.4x38.4 cm

GIFT BOX HxWxD:
28.4x12.4x34.5 cm



Sandwich Maker MH-788S

Art. Number: 1001155

- Non-stick plates type GRILL
- Plates size - 21.4x12.4 cm
- Cool touch housing
- Automatic temperature control
- Stainless steel decoration
- Lid with safety lock
- Upright storage
- Light indicators
- Anti-slip feet
- 750W, 220-240V / 50-60 Hz



Pcs / Ctn: 6
CARTON: 49x25x30.5 cm

GIFT BOX HxWxD:
9.5x24x23.2 cm



Belgian Waffle Maker MHT-1666WXL

NEW

Art. Number: 1009313

- Decorative Stainless Steel panel
- Belgian waffle type plate with size 23x16.5 cm
- Heat insulated housing
- Deep non-stick coated plates
- Adjustable thermostat
- On and Ready light indicators
- Anti-slip feet
- 1600W, 220-240V/ 50-60 Hz



Pcs / Ctn: 1
CARTON: 30.4x29.7x58.6 cm

GIFT BOX HxWxD:
28.5x14.5x28.3 cm



Waffle Maker MHT-1018W

Art. Number: 1004700

- Decorative stainless steel panel
- Plate type "CLOVER" with a diameter 19 cm
- Cool touch handle
- Non-stick plates for easy cleaning
- Temperature setting
- Upright storage
- On and Ready light indicators
- 1000W, 220-240V / 50-60 Hz



Pcs / Ctn: 6
CARTON: 60x27x40.2 cm

GIFT BOX HxWxD:
22.4x13.4x28.5 cm



Bubble Waffle Maker MHT-838

Art. Number: 1008635

- Non-stick coated plates for easy cleaning
- Insulated handle
- Plate diameter: 19 cm
- Automatic temperature control
- Heat and ready indicators light
- Upright storage
- Overheating protection
- Anti-slip feet
- 1000W, 220-240V/ 50-60 Hz



Pcs / Ctn: 6
CARTON: 57.6x23.4x38.6 cm

GIFT BOX HxWxD:
12.4x22x27.8 cm



Crepe Maker MHT-383

Art. Number: 1008636

- Non-stick coating plates for easy cleaning
- Cool touch housing
- Plates diameter - 30 cm
- Adjustable temperature control - 140 - 200°C
- Power and Ready light indicators
- Anti-slip feet
- Overheating protection
- Accessories: T-shaped wooden spreading stick
- Spatula
- 1200W, 220-240V / 50-60 Hz



Pcs / Ctn: 4
CARTON: 39.8x39.3x36.1 cm

GIFT BOX HxWxD:
9.6x37.3x34.7 cm



5in1 Microwave, Convection Oven, Grill Oven, Air Fryer and Combi cooker
MO-979 Air Plus 27L

NEW

Art. Number: 1008994

- Volume - 27 L
- 5 power levels + Defrost function
- Classic Convection Oven
- Grill Oven
- 9 preset programs Air Fryer
- 4 preset programs COMBI cooker
 - Microwave + Grill
 - Microwave + Convection
 - Microwave + Grill + Convection
 - Convection + Grill
- 10 preset combi-cooking recipes
- Multi-stage cooking, preheat on time, defrost by weight
- Child safety lock



Pcs / Ctn: 1
 CARTON: 0x0X0 cm

GIFT BOX HxWxD:
 31.1x53.8x45.9 cm



Microwave Oven MO-7059D

NEW

Art. Number: 1008993

- Volume - 25 L
- Durable and hygienic inner coating for easy cleaning
- 11 power levels
- 6 automatic menus: Popcorn, Potatoes, Frozen vegetables, Drinks, Dinner plate, Pizza
- Multi-stage cooking
- Preset function
- Digital management
- Internal LED lamp
- Blue LED display backlight
- Clock
- Defrost by weight and time
- 99 minutes 99 seconds timer
- Child safety lock
- Fast cooking
- Mute on/off



Pcs / Ctn: 1
 CARTON: 0x0X0 cm

GIFT BOX HxWxD:
 32.8x51.4x21.1 cm



Microwave Oven MO-5099D

Art. Number: 1008523

- Volume - 20 L
- Digital control
- 5 power levels
- Defrost by weight and time function
- Multistage cooking
- Quick cooking
- 8 Cooking functions - Reheat, Vegetables, Fish, Meat, Pasta, Potato, Frozen Pizza, Soup
- Child lock function
- Timer: 95 minutes
- Clock
- 255 mm glass turntable
- Cooking end signal
- Comfortable and stylish door handle with wood decoration
- 800W, 220-240V / 50-60 Hz



Pcs / Ctn: 1
 CARTON: 31x50X38 cm

GIFT BOX HxWxD:
 29x48.8x38 cm



Microwave Oven MO-5059D

Art. Number: 1008647

- Volume - 20 L
- Digital control
- 10 power levels
- Time and weight defrost function
- Multistage cooking
- Express Cooking
- 6 Cooking functions - Popcorn, Potato, Pizza, Frozen Vegetable, Beverage, Reheat
- "Do it yourself" function - Save up to 3 different customized settings
- „Child lock“ function
- Timer - 99 minutes
- Clock
- 255 glass turntable
- End of cooking signal
- Push button door opening
- 700W, 220-240V / 50-60 Hz



Pcs / Ctn: 1
CARTON: 0x0X0 cm

GIFT BOX HxWxD:
34.5x46.5x29.1 cm



Microwave Oven MO-5029B

Art. Number: 1008646

- Volume - 20 L
- Mechanical control
- 5 power levels
- Defrost
- 35 min cooking time
- 255 mm glass turntable
- Cooking end signal
- Mirror panel
- Push button door opening
- 700W, 220-240V / 50-60 Hz



Pcs / Ctn: 1
CARTON: 31x50X40 cm

GIFT BOX HxWxD:
29x48.8x38 cm



Microwave Oven MO-5009

Art. Number: 1008522

- Volume - 20 L
- Mechanical control
- 5 power levels
- Defrost
- 35 min cooking time
- 255 mm glass turntable
- Cooking end signal
- Push button door opening
- 700W, 220-240V / 50-60 Hz



Pcs / Ctn: 1
CARTON: 29x36X46 cm

GIFT BOX HxWxD:
27x31x43 cm



Microwave Oven MO-5019S

Art. Number: 1008648

- Volume - 20 L
- Mechanical control
- 5 power levels
- Defrost
- 35 min cooking time
- 255 mm glass turntable
- Cooking end signal
- Push button door opening
- 700W, 220-240V / 50-60 Hz



Pcs / Ctn: 1
CARTON: 0x0X0 cm

GIFT BOX HxWxD:
29x50x31 cm



Cooker Hood AMK-887D-BS

Art. Number: 1009287

- Minimum airflow: 213.9 m³/h
- Maximum airflow: 331.6 m³/h
- Material: Glass/metal
- Design: Decorative, inclined
- Ventilation method: 2 in 1 (Recirculation and Suction)
- Noise level: 47–56 dB
- Dimensions: 595 x 329 x 305 mm
- Air outlet diameter: 150 mm
- Air outlet location: Top
- Cable length: 165 cm
- Weight (net/gross): 7.7/10.2 kg
- Energy class: A++
- Annual energy consumption: 8.0 kWh
- Carbon filter: Optional (2 pieces/set, not included)

NEW



Pcs / Ctn: 1
CARTON: 61.5x43x36 cm

GIFT BOX HxWxD:
59.5x32.9x30.5 cm



Cooker Hood AMK-885D-B

Art. Number: 1009286

- Minimum airflow: 131.3 m³/h
- Maximum airflow: 209.6 m³/h
- Material: Glass/metal
- Design: Decorative, inclined
- Ventilation method: 2 in 1 (Recirculation and Suction)
- Carbon filter: Optional (1 piece, not included in the set)
- Noise level: 52–64 dB
- Dimensions: 595 x 235 x 335 mm
- Air outlet diameter: 120 mm
- Air outlet location: Top
- Cable length: 165 cm
- Weight (net/gross): 6.5/9 kg
- Energy class: A
- Annual energy consumption: 14.0 kWh
- Carbon filter: Optional (1 piece, not included in the set)

NEW



Pcs / Ctn: 1
CARTON: 62x28x38.5 cm

GIFT BOX HxWxD:
59.5x23.4x33.5 cm



Cooker Hood AMK-995CH-S

Art. Number: 1009285

- Minimum airflow: 339.9 m³/h
- Maximum airflow: 488.4 m³/h
- Material: Stainless steel (inox)
- Design: Decorative, chimney
- Ventilation method: 2 in 1 (Recirculation and Aspiration)
- Noise level: 63–66 dB
- Dimensions: 595 x 198 x 481 mm
- Air outlet diameter: 150 mm
- Air outlet location: Top
- Cable length: 165 cm
- Weight (net/gross): 6.2/8.1 kg
- Energy class: C
- Annual energy consumption: 33.3 kWh
- Carbon filter: Optional (2 pieces/set, not included)

NEW



Pcs / Ctn: 1
CARTON: 64x56x31.5 cm

GIFT BOX HxWxD:
59.5x50x27.9 cm



Cooker Hood AMK-955CH-S

Art. Number: 1009284

- Minimum airflow: 339.9 m³/h
- Maximum airflow: 488.4 m³/h
- Material: Stainless steel (inox)
- Design: Decorative, chimney
- Ventilation method: 2 in 1 (Recirculation and Aspiration)
- Noise level: 63–66 dB
- Dimensions: 595 x 198 x 481 mm
- Air outlet diameter: 150 mm
- Air outlet location: Top
- Cable length: 165 cm
- Weight (net/gross): 6.2/8.1 kg
- Energy class: C
- Annual energy consumption: 33.3 kWh
- Carbon filter: Optional (2 pieces/set, not included)

NEW



Pcs / Ctn: 1
CARTON: 64x23x54 cm

GIFT BOX HxWxD:
59.5x19.8x48.1 cm



Cooker Hood AMK-855BLD-S

NEW

Art. Number: 1009283

- Minimum airflow: 393.6 m³/h
- Maximum airflow: 588.7 m³/h
- Material: Metal
- Design: Flush mount (built-in)
- Ventilation method: 2 in 1 (Recirculation and Suction)
- Noise level: 60–67 dB
- Dimensions: 525 x 291 x 276 mm
- Air outlet diameter: 150 mm
- Air outlet location: Top
- Cable length: 165 cm
- Weight (net/gross): 5.4/7 kg
- Energy class: A
- Annual energy consumption: 44.2 kWh
- Carbon filter: Optional (2 pieces/set, not included)



Pcs / Ctn: 1
CARTON: 57x32x32 cm

GIFT BOX HxWxD:
52.5x29.1x27.6 cm



Cooker Hood AMK-775T-S2

NEW

Art. Number: 1009282

- Minimum airflow: 393.6 m³/h
- Maximum airflow: 588.7 m³/h
- Material: Metal
- Design: Built-in, Telescopic
- Ventilation method: 2 in 1 (Recirculation and Suction)
- Noise level: 60–67 dB
- Dimensions: 525 x 291 x 276 mm
- Air outlet diameter: 150 mm
- Air outlet location: Top
- Cable length: 165 cm
- Weight (net/gross): 5.4/7 kg
- Energy class: A
- Annual energy consumption: 39.9 kWh
- Carbon filter: Optional (2 pieces/set, not included)



Pcs / Ctn: 1
CARTON: 64x34.5x20.5 cm

GIFT BOX HxWxD:
59.5x30x16.1 cm



Cooker Hood AMK-755T-S

NEW

Art. Number: 1009281

- Minimum airflow: 179.6 m³/h
- Maximum airflow: 326.9 m³/h
- Material: Stainless steel/metal
- Design: Built-in, Telescopic
- Ventilation method: 2 in 1 (Recirculation and Suction)
- Noise level: 51–62 dB
- Dimensions: 595 x 300 x 225 mm
- Air duct diameter: 150 mm
- Air duct location: Top
- Cable length: 165 cm
- Weight (net/gross): 5.8/7 kg
- Energy class: C
- Annual energy consumption: 31.1 kWh
- Carbon filter: Optional (2 pieces/set, not included)



Pcs / Ctn: 1
CARTON: 64x35.5x26 cm

GIFT BOX HxWxD:
59.5x30x22.5 cm



Cooker Hood AMK-655C-S2

NEW

Art. Number: 1009280

- Minimum airflow: 173.7 m³/h
- Maximum airflow: 344.7 m³/h
- Material: Stainless steel (Inox)
- Design: Conventional
- Ventilation method: 2 in 1 (Recirculation and Suction)
- Noise level: 58–72 dB
- Air outlet diameter: 120 mm
- Air outlet location: Top and rear
- Cable length: 165 cm
- Weight (net/gross): 5.5/6.5 kg
- Energy class: D
- Annual energy consumption: 70.4 kWh
- Carbon filter: Optional (2 pieces/set, not included)



Pcs / Ctn: 1
CARTON: 63x53.5x14 cm

GIFT BOX HxWxD:
59.5x49.5x10 cm



Cooker Hood AMK-555C-S

NEW

Art. Number: 1009279

- Minimum airflow: 115.9 m³/h
- Maximum airflow: 201.6 m³/h
- Material: Stainless steel
- Design: Conventional
- Ventilation method: 2 in 1 (Recirculation and Suction)
- Noise level: 57-70 dB
- Air outlet diameter: 120 mm
- Air outlet location: Top and rear
- Cable length: 165 cm
- Weight (net/gross): 4.4/5.5 kg
- Energy class: D
- Annual energy consumption: 34.4 kWh
- Carbon filter: Optional (1 piece, not included)



Pcs / Ctn: 1
CARTON: 63x52x14 cm

GIFT BOX HxWxD:
59.5x48x10 cm



Cooker Hood AMK-455C-B

NEW

Art. Number: 1009278

- Minimum airflow: 120.3 m³/h
- Maximum airflow: 180 m³/h
- Material: Metal
- Design: Conventional
- Ventilation method: 2 in 1 (Recirculation and Suction)
- Carbon filter: Optional (1 piece, not included)
- Noise level: 63-69 dB
- Air outlet diameter: 120 mm
- Air outlet location: Top
- Cable length: 145 cm
- Weight (net/gross): 4.3/5.1 kg
- Energy class: B
- Annual energy consumption: 23.6 kWh



Pcs / Ctn: 1
CARTON: 63x51x13 cm

GIFT BOX HxWxD:
59.5x47x9.9 cm



Double Ceramic Hot Plate MHP-2022IS

NEW

Art. Number: 1008943

- Infrared heaters
- Heating area: 1800W - 200 mm, 1000W - 165 mm
- Adjustable thermostat control
- Fast and efficient heating
- Glass-ceramic coating
- Operating On/Off light indicator
- Anti-slip rubber feet
- 2800W, 220-240V / 50-60 HZ



Pcs / Ctn: 4
CARTON: 39.5x65x33 cm

GIFT BOX HxWxD:
9.5x63.5x31.5 cm



Ceramic Hot Plate MHP-2088IS

NEW

Art. Number: 1008942

- Infrared heater
- Heating area - 200 mm
- Adjustable thermostat control
- Fast and efficient heating
- Glass-ceramic coating
- Operating On/Off light indicator
- Anti-slip rubber feet
- 2000W, 220-240V / 50-60 Hz



Pcs / Ctn: 5
CARTON: 40x49x35 cm

GIFT BOX HxWxD:
9.5x38.9x33 cm



Hot Plate MHP-153CS

Art. Number: 1003563

- Stainless steel body
- Hot plate size - ø185 mm
- 5 power levels
- Operating On/Off light indicator
- Anti-slip rubber feet
- 1500W, 220-240V / 50-60 Hz



Pcs / Ctn: 6
CARTON: 33x30x53 cm

GIFT BOX HxWxD:
36.2x29.8x6.6 cm



Hot Plate MHP-151C

Art. Number: 1003562

- Metal chromed body
- Hot plate size - ø185 mm
- 4 power levels
- Operating On/Off light indicator
- Anti-slip rubber feet
- 1500W, 220-240V / 50-60 Hz



Pcs / Ctn: 6
CARTON: 35x31x53 cm

GIFT BOX HxWxD:
36.2x29.8x6.6 cm



Electric Grill MG-2536

Art. Number: 649140

- Die-cast aluminum plate (half ribbed, half flat)
- Plate size - 25x36 cm
- Non-stick coating
- Detachable power cord and adjustable thermostat
- Drainage hole and grease tray
- 2000W, 220-240V / 50-60 Hz



Pcs / Ctn: 3
CARTON: 33x34x48 cm

GIFT BOX HxWxD:
10.1x31.9x46.6 cm



Electric Grill MG-5126

Art. Number: 650505

- Die-cast aluminum plate (half ribbed, half flat)
- Plate size - 25x51 cm
- Marble non-stick coating
- Detachable power cord and adjustable thermostat
- Drainage hole and grease tray
- 2200W, 220-240V / 50-60 Hz



Pcs / Ctn: 3
CARTON: 35x33x63 cm

GIFT BOX HxWxD:
10.1x31.9x61.8 cm



Electric Grill With Glass Lid MG-4030M

Art. Number: 1006728

- Die-cast aluminum plate (half ribbed, half flat)
- Plate size - 40x30 cm
- Marble non-stick coating
- Tempered glass lid
- Detachable power cord and adjustable thermostat
- Drainage hole and water tray for less smoke
- 2000W, 220-240V / 50-60 Hz



Pcs / Ctn: 3
CARTON: 56.5x40x42 cm

GIFT BOX HxWxD:
13.4x57.6x37 cm



Nutritional Blender MNB-1200

Art. Number: 109290

- Powerful 1200W nutrition extractor for effective and fast nutrition extraction
- Six blades nutrition blender for extremely fine blending
- 1 pc. 800 ml blender bowl
- 1 pc. 1000 ml blender bowl
- 1 pc. cup cover for secure closing
- 1 pc. cup cover for direct consumption
- Unit dimensions: h - 21 cm, diameter - 14 cm
- Easy cleaning
- IM includes smoothie and drink recipes
- Nutrition blender is suitable for:
 - pureeing frozen fruits
 - fruits, vegetables and seeds blending for smoothies and purees
 - protein and fitness shakes preparation
 - appetizer, sauces and dressing stirring
 - ice crushing
- 1200W, 220-240V / 50-60 Hz



Pcs / Ctn: 2
CARTON: 40x31.5x36.5 cm

GIFT BOX HxWxD:
34.8x19.3x30.2 cm



Nutritional Blender MNB-688

Art. Number: 648576

- Powerful blender for efficient and fast nutrients extraction
- 6 blades nutrition blender for extremely fine blending
- 2 pcs. 800 ml blender bowl
- 1 pc. cup cover for secure closing
- 1 pc. cup cover for direct consumption
- 600W, 220-240V / 50-60 Hz



Pcs / Ctn: 6
CARTON: 36.6x42.4x49.9 cm

GIFT BOX HxWxD:
36.5x13.7x24.3 cm



Nutritional Blender MNB-688

Art. Number: 648575

- Powerful blender for efficient and fast nutrients extraction
- 6 blades nutrition blender for extremely fine blending
- 2 pcs. 800 ml blender bowl
- 1 pc. cup cover for secure closing
- 1 pc. cup cover for direct consumption
- 600W, 220-240V / 50-60 Hz



Pcs / Ctn: 6
CARTON: 36.6x42.4x49.9 cm

GIFT BOX HxWxD:
34.8x13.7x24.3 cm



Table Blender MB-555SG

Art. Number: 1009211

- Powerful blender
- Glass jug capacity - 1.5 L
- 2 speed settings
- Pulse function
- Safety system ensures operation only when the jug is correctly assembled
- 4 stainless steel blending blades
- Non-slip rubber feet
- Lid opening for adding products
- 500W, 220-240V / 50-60 Hz

NEW



Pcs / Ctn: 3
CARTON: 40x34x57 cm

GIFT BOX HxWxD:
27x32x19 cm



Table Blender MB-155

Art. Number: 1003724

- Jug capacity - 1.5 L
- 2 speed setting
- Pulse function
- Anti-engagement system before fully installing the jug
- 4 stainless steel blending blades
- Lid opening for adding products
- Power cord storage
- Anti-slip feet
- 500W, 220-240V / 50-60 Hz



Pcs / Ctn: 6
CARTON: 40x37x54 cm

GIFT BOX HxWxD:
37.8x17.5x17.5 cm



Juice Extractor MJ-686

Art. Number: 1006260

- Stainless steel body
- Feeding tube - 65 mm
- Pulp container volume - 1.5 L
- Juice container - 0.45 L
- Stainless steel strainer
- Powerful motor
- Two speeds
- Safety lock
- Non-slip rubber feet
- 600W, 220-240V / 50-60 Hz



Pcs / Ctn: 4
CARTON: 34x40x63 cm

GIFT BOX HxWxD:
31x30.5x18.5 cm



Juice Extractor Muhler MJ-696

Art. Number: 1006261

- Stainless steel body
- Feeding tube - 65 mm
- Pulp container
- Stainless steel strainer
- Powerful motor
- Saving space design
- Two speeds
- Non-slip rubber feet
- 600W, 220-240V / 50-60 Hz



Pcs / Ctn: 4
CARTON: 38x50x65 cm

GIFT BOX HxWxD:
34.8x31.5x19.7 cm

Juice Extractor Muhler MJ-858, 800W

Art. Number: 1001817

- Stainless steel body
- Feeding tube - 76 mm
- Pulp container volume - 1.5 L
- Juice container - 0.5 L
- Stainless steel strainer
- Powerful motor
- Two speeds
- Turbo button
- Safety locking
- 800W, 220-240V/ 50-60 Hz

Pcs / Ctn: 2
CARTON: 45.5x34.5x44 cm

GIFT BOX HxWxD:
34x21x43.5 cm



Citrus Juicer MJ-4020

Art. Number: 1008801

- Capacity: 1.2 L
- Detachable parts for easy operation and cleaning
- Indicator lamp
- Two-way operation
- 40W, 220-240V/ 50-60 Hz

NEW

Pcs / Ctn: 8
CARTON: 44x37x54 cm

GIFT BOX HxWxD:
24x20x15.5 cm



Citrus Juicer MJ-2505

Art. Number: 1003790

- Capacity - 0.5 L
- Detachable parts for easy operating and cleaning
- Two cones - for small and big fruits
- Two-way operation
- 25W, 220-240V / 50-60 Hz

Pcs / Ctn: 12
CARTON: 41x33x50 cm

GIFT BOX HxWxD:
18.8x15.3x15.3 cm



Hand Mixer MX-300

Art. Number: 1009084

- 5 mixing speeds
- TURBO button
- Special stand for storage and convenient placement during operation
- Beater release button
- Chrome dough hooks
- Chrome mixer beaters
- 300W, 220-240V / 50-60 Hz

NEW

Pcs / Ctn: 12
CARTON: 44.7x25x40 cm

GIFT BOX HxWxD:
0x0x0 cm



Hand Mixer MX-250

Art. Number: 1009083

- 5 speed settings
- TURBO button
- Button for releasing the beaters
- 250W, 220-240V / 50-60 Hz

NEW



Pcs / Ctn: 12
CARTON: 39.5x27X33.5 cm

GIFT BOX HxWxD:
19x8.5x15.8 cm



Hand Blender With Mixer And Chopper 3in1 MB-99S

Art. Number: 1008642

- 2 speed settings - Normal and Turbo
- Powerful motor
- Stainless steel body
- Rotary gradual speed control
- Stainless steel blending shaft with 4-blade knife
- 500 ml chopper bowl
- Mixer attachment
- 1000W, 220-240V / 50-60 Hz



Pcs / Ctn: 6
CARTON: 27.5x44.2X37.8 cm

GIFT BOX HxWxD:
25.5x19.5x12 cm



Hand Blender MB-77S

Art. Number: 1008641

- 2 speed settings - Normal and Turbo
- Powerful motor
- Stainless steel body
- Rotary gradual speed control
- Stainless steel blending shaft with 4-blade knife
- 1000W, 220-240V / 50-60 Hz



Pcs / Ctn: 12
CARTON: 40x28.8X30.6 cm

GIFT BOX HxWxD:
38x9x7.2 cm



Blender 3in1 MB-603

Art. Number: 1008264

- 2 speed settings - Normal and Turbo
- Durable motor
- 500 ml chopper bowl
- Blending and chopping blades of stainless steel
- Stainless steel blending rod
- Light mixtures whisk
- Anti-slip silicone chopper bowl mat
- 600W, 220-240V / 50-60 Hz



Pcs / Ctn: 6
CARTON: 45.8x38.1X25.3 cm

GIFT BOX HxWxD:
22x12.1x24.5 cm



Hand Blender 2in1 MB-402

Art. Number: 1008262

- On/Off button
- Durable motor
- 300 ml chopper bowl
- Blending and chopping blades of stainless steel
- 400W, 220-240V / 50-60 Hz

Pcs / Ctn: 6
CARTON: 39.5x19x36.9 cm

GIFT BOX HxWxD:
18.5x17.2x11.7 cm



Hand Blender MB-600

Art. Number: 1008263

- 2 speed settings - Normal and Turbo
- Durable motor
- Stainless steel blending rod and blade
- 600W, 220-240V / 50-60 Hz

Pcs / Ctn: 6
CARTON: 41x22.8x17.8 cm

GIFT BOX HxWxD:
20x11x8.5 cm



Hand Blender MB-233

Art. Number: 1002889

- Single speed setting
- Detachable blending attachment
- Light and comfortable grip
- Stainless steel knife
- 200W, 220-240V / 50-60 Hz

Pcs / Ctn: 18
CARTON: 24x44x40 cm

GIFT BOX HxWxD:
37x7x7 cm



Hand Blender MB-213

Art. Number: 1002715

- Single speed setting
- Detachable blending attachment
- Light and comfortable grip
- Stainless steel knife
- 200W, 220-240V / 50-60 Hz

Pcs / Ctn: 18
CARTON: 24x44x40 cm

GIFT BOX HxWxD:
35.5x7x7 cm



Mini Chopper MCH-411

Art. Number: 1008245

- Stainless steel double blade, easy to disassemble
- Bowl chopper with 500 ml capacity
- Pulse-button for starting work when pressed with the palm
- Lid locking system for greater safety
- Silicone anti-slip bowl mat
- Suitable for - cutting, mixing, slicing meat, etc.
- 400W, 220-240V / 50-60 Hz

Pcs / Ctn: 4
CARTON: 29.3x29x29 cm

GIFT BOX HxWxD:
26.5x13.5x13.5 cm



Egg And Food Steamer ME-516

Art. Number: 1008571

- Capacity - 16 eggs
- 2 egg trays
- Tray for poaching or scrambled eggs - 4 eggs
- Steam cooking - easy preparation of small portions of vegetables, fish, sausages, mushrooms and more
- Measuring cup with egg piercer
- Timer with sound signal for end of set time
- Light indicator
- Dry-boil cut-out feature
- 500W, 220-240V / 50-60 Hz

Pcs / Ctn: 8
CARTON: 40x23x71.5 cm

GIFT BOX HxWxD:
21.5x17.5x18.5 cm



Egg Boiler ME-271

Art. Number: 1002580

- Capacity - 7 eggs
- On/Off button
- Plastic cover
- Tempered water cup
- 350W, 220-240V / 50-60 Hz

Pcs / Ctn: 12
CARTON: 34x34x49.5 cm

GIFT BOX HxWxD:
16x16x15.8 cm



Digital Kitchen Scale KSC-2088

Art. Number: 1000742

- Capacity - 5 kg
- Graduation 1 g
- Units - g / lb / oz
- Tare function
- Stainless steel platform
- Product Dimensions: 208x192 mm
- LCD display dimensions - 45x19 mm
- Power: 2xAAA battery (included)

Pcs / Ctn: 12
CARTON: 44.5x40.5x23 cm

GIFT BOX HxWxD:
19.5x7x21.3 cm



Digital Kitchen Scale KSC-2027

Art. Number: 1000740

- Capacity - 5 kg
- Graduation 1 g
- Weight Mode: g / Kg / lb / oz
- Tare function
- Tempered glass body
- High precision strain gauge technology
- Display size: 51x21 mm
- Product dimensions: 200x150 mm
- Power: 1x3V CR2032 battery (included)

Pcs / Ctn: 20
CARTON: 23x26X33 cm

GIFT BOX HxWxD:
15.4x2.3x20.7 cm



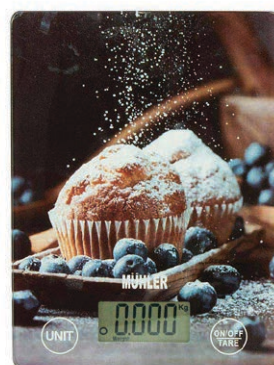
Digital Kitchen Scale KSC-2027

Art. Number: 1000734

- Capacity - 5 kg
- Graduation 1 g
- Weight Mode: g / Kg / lb / oz
- Tare function
- Tempered glass body
- High precision strain gauge technology
- Display size: 51x21 mm
- Product dimensions: 200x150 mm
- Power: 1x3V CR2032 battery (included)

Pcs / Ctn: 20
CARTON: 23x26X33 cm

GIFT BOX HxWxD:
15.4x2.3x20.7 cm



Digital Kitchen Scale KSC-2027

Art. Number: 1003167

- Capacity - 5 kg
- Graduation 1 g
- Weight Mode: g / Kg / lb / oz
- Tare function
- Tempered glass body
- High precision strain gauge technology
- Display size: 51x21 mm
- Product dimensions: 200x150 mm
- Power: 1x3V CR2032 battery (included)

Pcs / Ctn: 20
CARTON: 23x26X33 cm

GIFT BOX HxWxD:
32.3x2.3x20.7 cm



Digital Kitchen Scale KCS-2027

Art. Number: 1003169

- Capacity - 5 kg
- Graduation 1 g
- Weight Mode: g / Kg / lb / oz
- Tare function
- Tempered glass body
- High precision strain gauge technology
- Display size: 51x21 mm
- Product dimensions: 200x150 mm
- Power: 1x3V CR2032 battery (included)

Pcs / Ctn: 20
CARTON: 23x26X33 cm

GIFT BOX HxWxD:
15.4x2.3x20.7 cm



Digital Kitchen Scale KSC-2024

Art. Number: 1008559

- Capacity - 5 kg
- Graduation 1 g
- Units - g / ml / lb / fl / oz
- Tare function
- Low battery indicator
- Overload Indication
- Display size: 53x25 mm
- Product Dimensions: 175x140 mm
- Power: 2xAAA battery (included)



Pcs / Ctn: 20
CARTON: 32.5x50X21.5 cm

GIFT BOX HxWxD:
4.7x15.5x20 cm



Digital Kitchen Scale KSC-2026R

Art. Number: 1003172

- Capacity - 5 kg
- Graduation 1 g
- Weight Mode: g / Kg / lb / oz
- Tare function
- Tempered glass body
- High precision strain gauge technology
- Display size: 51x21 mm
- Product dimensions: 190x17 mm
- Power: 1x3V CR2032 battery (included)



Pcs / Ctn: 20
CARTON: 21.3x26.5X43 cm

GIFT BOX HxWxD:
3.1x19.7x19.8 cm



Vacuum Sealer MV-125

Art. Number: 1007089

- Wet and dry food vacuuming
- "Seal" function
- "Vacuum" function
- "Vacuum and seal" function
- Canister and external containers vacuuming
- Suitable for bags and rolls
- Sealing width - 28 cm
- 10 pcs pre-cut bags (17x25 cm) included
- Vacuuming hose
- Cutting blade
- Built-in vacuuming roll space
- Indicator light
- Noise level 70 dB
- Max air flow: 7 L/Min
- Vacuuming power 85 kpa
- Do not vacuum liquids (water, soups, purees)
- Water entering the appliance can lead to damage!
- Before vacuuming wet products, wrap or put them in a bag or plastic wrap
- 110W, 220-240V / 50-60 Hz



Pcs / Ctn: 24
CARTON: 58.5x68.5X39 cm

GIFT BOX HxWxD:
9.8x37.6x16.3 cm



Vacuum Sealer MV-120

Art. Number: 1007088

- Wet and dry food vacuuming
- "Seal" function
- "Vacuum and seal" function
- Suitable for bags and rolls
- Sealing width - 28 cm
- 10 pcs pre-cut bags (17x25 cm) included
- LED display
- Noise level 60 dB
- Max air flow: 5L/Min
- Vacuuming power 60 kpa
- Do not vacuum liquids (water, soups, purees)
- Water entering the appliance can lead to damage!
- Before vacuuming wet products, wrap or put them in a bag or plastic wrap
- 120W, 220-240V / 50-60 Hz



Pcs / Ctn: 20
CARTON: 46.5x57X43 cm

GIFT BOX HxWxD:
10.5x38.5x11 cm



Vacuum Sealer MV-90N

Art. Number: 1007087

- Wet and dry food vacuuming
- "Seal" function
- "Vacuum and seal" function
- Vacuum releasing valve
- Suitable for bags and rolls
- Sealing width - 29.5 cm
- 10 pcs pre-cut bags (17x25 cm) included
- Indicator light
- Noise level 60 dB
- Max air flow: 5 L/Min
- Vacuuming power 60 kpa
- Do not vacuum liquids (water, soups, purees)
- Water entering the appliance can lead to damage!
- Before vacuuming wet products, wrap or put them in a bag or plastic wrap
- 90W, 220-240V / 50-60 Hz



Pcs / Ctn: 40
CARTON: 39.5x59.5x45.5 cm

GIFT BOX HxWxD:
7x37.5x10 cm



Vacuum Sealer Bag Roll BMROLL 1pc 20x500 cm

Art. Number: 1005914

- Vacuum sealer bag roll - 20x500 cm
- Thickness - 180 microns
- Material - Polyamide + Polyethylene



Pcs / Ctn: 20
CARTON: 24x30x24 cm

GIFT BOX HxWxD:
5x20x5 cm



Vacuum Sealer Bag Roll BMROLL 1pc 25x500 cm

Art. Number: 1004906

- Vacuum sealer bag roll - 25x500 cm
- Thickness - 180 microns
- Material - Polyamide + Polyethylene



Pcs / Ctn: 20
CARTON: 29x23x27 cm

GIFT BOX HxWxD:
25x4x4 cm



Pre-cut Vacuum Sealer Bags BMBAG 50 pcs 15x25 cm

Art. Number: 1005915

- Vacuum sealer bags - 50 pcs, 15x25 cm
- Thickness - 180 microns
- Material - Polyamide + Polyethylene



Pcs / Ctn: 60
CARTON: 40x30x50 cm

GIFT BOX HxWxD:
0x0x0 cm



Pre-cut Vacuum Sealer Bags BMBAG 50 pcs 20x30 cm

Art. Number: 1005916

- Vacuum sealer bags - 50 pcs, 20x30 cm
- Thickness - 180 microns
- Material - Polyamide + Polyethylene



Pcs / Ctn: 60
CARTON: 40x64x35 cm

GIFT BOX HxWxD:
0x0x0 cm



Ice Maker MI-1355

Art. Number: 1009376

- Up to 12 kg of ice in 24 hours
- Ice cube size: Ø11 × Ø23 × 25.5 mm
- Water tank capacity – 1.0 L
- Inspection window
- LED control panel
- Ice container warning
- Water tank empty warning
- Self-cleaning function
- Ice time: ~ 6 minutes/cycle
- Ice speed: 9 pieces of ice cubes/cycle
- Removable ice basket with a capacity of up to 80 pieces of ice cubes
- Compressor cooling
- Refrigerant: R600a
- Power cord length: 1 m
- Accessories:
 - Ice basket
 - Ice scoop
- 150W, 220-240V / 50-60 Hz

NEW



Pcs / Ctn: 1
CARTON: 31x24.1x32 cm

GIFT BOX HxWxD:
28.6x23.6x27.9 cm



Meat Grinder With Tomato Juicer MG-1808TS

Art. Number: v

- Working capacity: 2 kg / min
- Tomato juice attachment
- Sausage-making attachment
- Stainless steel blade
- Meat pusher attachment
- 2 blade sizes - 5 mm medium grind, 7 mm coarse grind
- Noise level - 85 dB (A)
- 4-function button - On/Off, Forward/Reverse
- Release button
- High-quality plastic housing with stainless steel decoration
- Aluminum grinding and auger attachment
- Stainless steel meat tray
- Storage space for blades
- Rated/Maximum power: 600W/1800W
- 1800W, 220-240V/ 50-60 Hz

NEW



Pcs / Ctn: 1
CARTON: 0x0x0 cm

GIFT BOX HxWxD:
0x0x0 cm



Meat Grinder With Tomato Juicer MG-1303TS

Art. Number: 1008475

- High output: up to 1.5 kg / min
- Tomato juice attachment
- Sausages attachment
- Stainless steel cutting blade
- Food pusher
- 2 grind sizes - 5 mm (medium) and 7 mm (coarse)
- Noise level - 82 dB (A)
- 4 functions: On, Off, Forward, Reverse
- Release button
- ABS plastic body and chromed decoration
- Aluminum grinder head and auger
- Plastic tray
- Cutters storage box
- Nominal power - 600W
- 1300W, 220-240V / 50-60 Hz



Pcs / Ctn: 2
CARTON: 28.6x30.8x35.6 cm

GIFT BOX HxWxD:
17.5x15x14 cm



Water Dispenser WD-11ED

Art. Number: 1005462

- Electronic cooling
- Heating power - 500W
- Heating capacity - 5 L / hour, 95°C
- Stainless steel hot water tank - 1 L
- Cooling power - 70W
- Cooling capacity - 0.8 L / hour, 10°C
- Suitable for gallons with throat diameter - 45 mm and height - 60 mm
- 570W, 220V-240V / 50-60 Hz

Pcs / Ctn: 1
CARTON: 40.5x30x29 cm

GIFT BOX HxWxD:
0x0x0 cm



Water Dispenser WD-15ED

Art. Number: 1002516

- Electronic cooling
- Heating power - 500W
- Heating capacity - 5 L / hour, 95°C
- Stainless steel hot water tank - 1 L
- Cooling power - 70W
- Cooling capacity - 0.8 L / hour, 10°C
- Suitable for gallons with throat diameter - 45 mm and height - 60 mm
- 570W, 220V-240V / 50-60 Hz

Pcs / Ctn: 1
CARTON: 42x30.5x31.5 cm

GIFT BOX HxWxD:
42x30.5x31.5 cm



Water Dispenser WD-31CTD

Art. Number: 1005059

- Compressor cooling
- Heating power - 420W
- Cooling power - 85W
- Water heating capacity - 5 L / hour, 90°C
- Water cooling capacity - 2 L / hour, 10°C
- Refrigerant - R600a / 18 g
- Climate class - ST/T
- Fits gallons with neck diameter - 45 mm and height - 60 mm
- 505W, 220-240V / 50-60 Hz

Pcs / Ctn: 1
CARTON: 29x47x51.5 cm

GIFT BOX HxWxD:
29x47x51.5 cm



Water Dispenser WD-33CTD

Art. Number: 1004249

- Compressor cooling
- Push faucet buttons
- Heating power - 420W
- Stainless steel hot water tank: 0.8 L
- Heating capacity - 5 L / hour, 80-95°C
- Cooling power - 85W
- Stainless steel cold water tank: 3 L
- Cooling capacity - 2 L / hour, 5-10°C
- Evaporator - full copper
- Refrigerant - R600a gas
- Fits gallons with neck diameter - 45 mm and height - 60 mm
- 505W, 220-240V / 50-60 Hz

Pcs / Ctn: 1
CARTON: 52x47x30 cm

GIFT BOX HxWxD:
52x47x30 cm



Water Dispenser WD-20ES

Art. Number: 1002514

- Electronic cooling
- Heating power - 500W
- Heating capacity - 5 L / hour, 95°C
- Stainless steel hot water tank - 1 L
- Cooling power - 70W
- Cooling capacity - 0.8 L / hour, 10°C
- Suitable for gallons with throat diameter - 45 mm and height - 60 mm
- 570W, 220V-240V / 50-60 Hz

Pcs / Ctn: 1
CARTON: 87x33x30 cm

GIFT BOX HxWxD:
86.5x32.5x29.5 cm



Water Dispenser WD-35CT

Art. Number: 1008525

- Compressor cooling
- With cabinet
- Heating power - 420W
- Stainless steel hot water tank: 1.1 L
- Heating Capacity - 5 L / hour, 80-95°C
- Cooling power - 85W
- Stainless steel cold water tank: 2.8 L
- Cooling Capacity - 2 L / hour, 5-10°C
- Evaporator - full copper
- Refrigerant - R600a / 20 g
- Fits gallons with neck diameter - 45 mm and height - 60 mm
- 505W, 220-240V / 50-60 Hz

Pcs / Ctn: 1
CARTON: 90x32x30 cm

GIFT BOX HxWxD:
88x32x30 cm



Water Dispenser WD-37CT

Art. Number: 1004250

- Compressor cooling
- With cabinet
- Heating power - 420W
- Stainless steel hot water tank: 0.8 L
- Heating capacity - 5 L / hour, 80-95°C
- Cooling power - 85W
- Stainless steel cold water tank: 3 L
- Cooling capacity - 2 L / hour, 5-10°C
- Evaporator - full copper
- Refrigerant - R600a / 18 g
- Fits gallons with neck diameter - 45 mm and height - 60 mm
- 505W, 220-240V / 50-60 Hz

Pcs / Ctn: 1
CARTON: 90x35x34 cm

GIFT BOX HxWxD:
0x0x0 cm



Water Dispenser WDI-55CT

Art. Number: 1009310

- Top Loading
- Compressor Cooling
- Heating Power: 500W
- Heating Capacity: 5L/h, ≥90°C
- Cooling Capacity: 2L/h, ≤10°C
- Ice Making Power: 130W
- Ice Capacity: 12kg/24h
- Cooling Current: 1.5A
- Stainless Steel Cold Water Tank: 2.8 L
- Refrigerant: R600a
- Suitable for 19L water bottles (- 27cm diameter, - 49cm height)
- 630W, 220-240V / 50-60 Hz

NEW



Pcs / Ctn: 1
CARTON: 110.6x35.5x39 cm

GIFT BOX HxWxD:
105.2x31x35 cm



Water Dispenser WD-99CBL

Art. Number: 1009305

- Water Dispenser
- Bottom loading
- Compressor cooling
- Heating power - 500W
- Heating capacity - 5 L / hour, 85-95°C
- Cooling power - 80W
- Stainless steel cold water tank - 3 L
- Cooling capacity - 2 L / hour, 8-12°C
- Refrigerant: R600a
- Suitable for 19 L water bottles with - 27 cm diameter and - 49 cm height
- 580W, 220-240V/ 50-60 Hz

Pcs / Ctn: 1
CARTON: 0x0X0 cm

GIFT BOX HxWxD:
0x0x0 cm



NEW

Cup Holder CH-33

Art. Number: 1002518

- Plastic Cup Dispenser - 33 cups
- Simple magnet mountage
- Diameter - 8.5 cm

Pcs / Ctn: 50
CARTON: 72x51X59 cm

GIFT BOX HxWxD:
34.5x11.5x9.5 cm



Cup Holder CH-40

Art. Number: 1002517

- Plastic Cup Dispenser - 40 cups
- Simple Magnet mountage
- Diameter - 7.9 cm

Pcs / Ctn: 32
CARTON: 74x44X43 cm

GIFT BOX HxWxD:
41.3x10x8.7 cm



Electric Water Pump Electric WP-055

Art. Number: 1004739

- Convenient with cordless use
- High quality stainless steel outlet tube
- Max. debit - 1.4 L/m
- Charging indicator light
- Suitable for 3, 5, 6, 7, 10, 11, 12 and 19 L
- Accessories:
 - Silicone tube
 - USB charging cable
 - Adapter for bottles from 3 to 12 L

Pcs / Ctn: 60
CARTON: 40x38X44 cm

GIFT BOX HxWxD:
14.2x9.2x7.7 cm



Water Pump Electric WP-099

Art. Number: 1004740

- Convenient with cordless use
- Children protection lock
- High quality stainless steel outlet tube
- Max. debit - 1.4 L/m
- Charging indicator light
- Suitable for 3, 5, 6, 7, 10, 11, 12 and 19 L
- Accessories:
 - Silicone tube
 - USB charging cable
 - Adapter for bottles from 3 to 12 L

Pcs / Ctn: 48
CARTON: 38x38X43.5 cm

GIFT BOX HxWxD:
19.5x10x8.8 cm





Vacuum

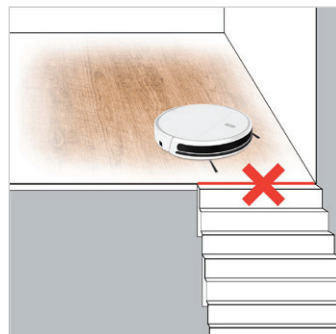


Mopping

Robot Vacuum Cleaner Bobby 1

Art. Number: 1004753

- Brushless motor with 1400 Pa suction power
- 2 in 1 - Vacuum & mopping
- Auto go back to charging station
- 2550 mah Li-ion battery
- 200 ml dust bin container
- 230 ml water tank with electronic control of the water flow
- Tuya Smart App
- Remote control:
 1. Auto cleaning
 2. Edge cleaning
 3. Spot cleaning
 4. Zigzag cleaning
 5. Manual control
 6. Water flow adjustment in two levels.
- 2 cleaning modes: Standard & Turbo
- Amazon Alexa and Google Assistant



Pcs / Ctn: 4
CARTON: 42x36x53 cm

GIFT BOX HxWxD:
40x34.5x12.7 cm

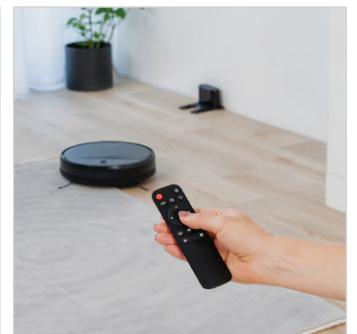
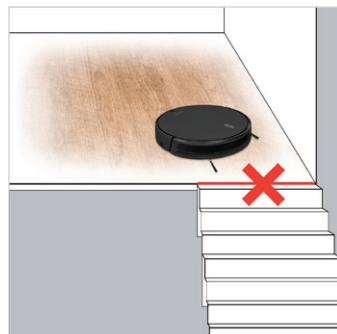




Robot Vacuum Cleaner Bobby 1

Art. Number: 1004755

- Brushless motor with 1400 Pa suction power
- 2 in 1 - Vacuum & mopping
- Auto go back to charging station
- 2550 mah Li-ion battery
- 200 ml dust bin container
- 230 ml water tank with electronic control of the water flow
- Tuya Smart App
- Remote cotrol:
 1. Auto cleaning
 2. Edge cleaning
 3. Spot cleaning
 4. Zigzag cleaning
 5. Manual control
 6. Water flow adjustment in two levels.
- 2 cleaning modes: Standard & Turbo
- Amazon Alexa and Google Assistant



Pcs / Ctn: 4
 CARTON: 42x36x53 cm

GIFT BOX HxWxD:
 40x34.5x12.7 cm



Left Brush For Bobby 1

Art. Number: 1004748

- Left brush for robot vacuum cleaner MÜHLER Bobby 1



Pcs / Ctn: 1000
CARTON: 58x50.5X40.5 cm

GIFT BOX HxWxD:
0x0x0 cm



Right Brush For Bobby 1

Art. Number: 1004749

- Right brush for robot vacuum cleaner MÜHLER Bobby 1



Pcs / Ctn: 1000
CARTON: 58x50.5X40.5 cm

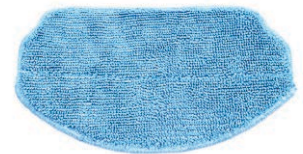
GIFT BOX HxWxD:
0x0x0 cm



Mop For Bobby 1

Art. Number: 1004746

- Mop for robot vacuum cleaner MÜHLER Bobby 1



Pcs / Ctn: 1250
CARTON: 58x50.5X40.5 cm

GIFT BOX HxWxD:
58x50.5x40.5 cm



High Efficiency Filter For Bobby 1

Art. Number: 1004756

- High efficiency HEPA filter for robot vacuum cleaner MÜHLER Bobby 1



Pcs / Ctn: 1250
CARTON: 58x50.5X40.5 cm

GIFT BOX HxWxD:
58x50.5x40.5 cm



Cotton Filter For Bobby 1

Art. Number: 1004762

- Cotton filter for robot vacuum cleaner MÜHLER Bobby 1



Pcs / Ctn: 2000
CARTON: 32.6x32X14 cm

GIFT BOX HxWxD:
0x0x0 cm



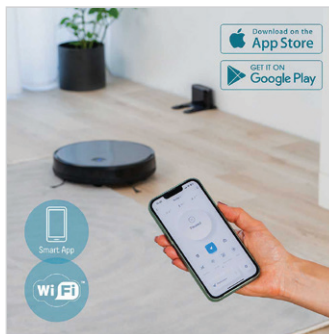
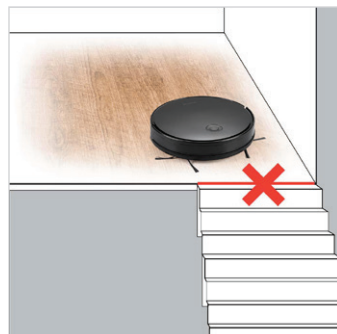


Robot Vacuum Cleaner Bobby 2

Art. Number: 1008408

- Brushless motor with 4 suction power levels
 - ECO: 600 Pa
 - Standard: 1000 Pa
 - Turbo: 2000 Pa
 - Max: 2700 Pa
- 3in1 - Scrubbing, vacuuming and mopping
- The gyroscope navigation system enables pitch-perfect cleaning
- Main rolling brush rpm - 1400
- Auto go back to charging station
- Battery - lithium-ion 2600 mAh / 14.4V / 0.6 mAh
- Removable dust box / water tank capacity - 340 ml / 250 ml
- Charging / working time - 250 / 140 min
- Wi-Fi remote control via Tuya Smart application
- Remote control
- 4 cleaning modes:
 1. Auto cleaning
 2. Random cleaning
 3. Edge cleaning
 4. Manual cleaning

- Wake up function
- Scheduled cleaning
- The HEPA filter emits clean air without particles, allergens or germs
- Threshold overcome with height up to 15 mm
- Speed: 30 cm/s
- Noise level - 70 dB (A)
- Anti-fall sensor
- Collision sensor
- Accessories: 2 x left and right side brushes, 2 x HEPA filters and 2 x mops
- Voice control through Amazon Alexa and Google Assistant



Pcs / Ctn: 4
 CARTON: 55x39.8x46.6 cm

GIFT BOX HxWxD:
 44.6x38.3x13.1 cm



Left And Right Brushes Set For Vacuum Cleaner Robot Bobby 2

Art. Number: 1008467

- Normal use of the device suggests, the brushes to be replaced once every 6 months.
- Material: Plastic + Nylon



Pcs / Ctn: 100
CARTON: 0x0X0 cm

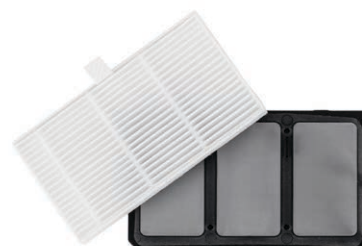
GIFT BOX HxWxD:
0x0x0 cm



High Efficiency Filter For Vacuum Cleaner Robot Bobby 2

Art. Number: 1008442

- The HEPA filter should not be washed.
- With normal use of the device, the filter should be changed once every 3-6 months.
- Material: PET (Polyethylene Tereflatate)



Pcs / Ctn: 1250
CARTON: 0x0X0 cm

GIFT BOX HxWxD:
0x0x0 cm



Mop Cloth For Vacuum Cleaner Robot Bobby 2

Art. Number: 1008445

- Wash the mop under running water periodically.
- With normal use of the device, the mop should be replaced once every 4-6 months.
- Material: Dacron and nylon



Pcs / Ctn: 1250
CARTON: 58x50.5X40.5 cm

GIFT BOX HxWxD:
12.5x9x4.5 cm



Bagless Vacuum Cleaner MVC-85BSL

Art. Number: 1008205

- Dust tank capacity - 2.5 L
- Easy and hygienic dust disposal
- Adjustable speed control
- Overheat shut-off
- Three-stage filtration for cleaner air
- Soft and mesh inlet washable filters
- High performance floor brush for soft or hard floors
- Comfortable ergonomic handle
- Automatic cable retraction
- Power cord - 5 m
- Operating range - 8 m
- Parking position
- Carrying handle
- Noise level - 75 dB (A)
- Weight - 6.9 kg
- Outlet HEPA filter
- Accessories - telescopic metal tube; flexible hose with 140 cm length; flexible attachment with 60 cm length, for access under and behind furniture, corners, etc.; attachment for furniture; telescopic attachment for hard to reach places
- 850W, 220-240V / 50-60 Hz



Pcs / Ctn: 1
CARTON: 31x55x32 cm

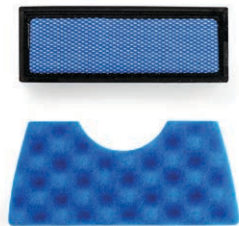
GIFT BOX HxWxD:
31x55x32 cm



Sponge Filter For MVC-85BSL

Art. Number: 1008208

- Sponge filter for vacuum cleaner MÜHLER MVC-85BSL



Pcs / Ctn: 125
CARTON: 40x40x60 cm

GIFT BOX HxWxD:
0x0x0 cm



Filter HEPA For Vacuum Cleaner MVC-85BSL

Art. Number: 1008207

- Outlet HEPA filter for vacuum cleaner MÜHLER MVC-85BSL



Pcs / Ctn: 250
CARTON: 40x40x60 cm

GIFT BOX HxWxD:
0x0x0 cm



Turbo Brush For Upholstery And Pets For Vacuum Cleaners MVC-80BS, MVC-85BSL

Art. Number: 1008209

- Turbo brush for upholstery and pet hairs - for vacuum cleaners Mühler MVC-80BS and MVC-85BSL
- Effectively cleans furniture and carpets from hair and dust.



Pcs / Ctn: 42
CARTON: 70x50x30 cm

GIFT BOX HxWxD:
20x17x8.5 cm



Bagless Vacuum Cleaner MVC-80BS

Art. Number: 1008204

- Dust tank capacity - 2.0 L
- Easy and hygienic dust disposal
- Adjustable speed control
- Overheat shut-off
- Three-stage filtration for cleaner air
- Inlet HEPA filter
- Outlet HEPA filter
- Automatic cable retraction
- Power cord - 5 m
- Operating range - 8 m
- Parking position
- Carrying handle
- Noise level - 75 dB (A)
- Weight - 5.9 kg
- Accessories - telescopic metal tube; flexible attachment with 60 cm length, for access under and behind furniture, corners, etc.; attachment for furniture; telescopic attachment for hard-to-reach places
- High performance floor brush for soft or hard floors
- 850W, 220-240V / 50-60 Hz



Pcs / Ctn: 1
CARTON: 29x49x29.5 cm

GIFT BOX HxWxD:
29x49x29.5 cm



Outlet HEPA Filter For MVC-80BS

Art. Number: 1008978

- Outlet HEPA filter fo MUHLER MVC-80BS



Pcs / Ctn: 125
CARTON: 40x40x60 cm

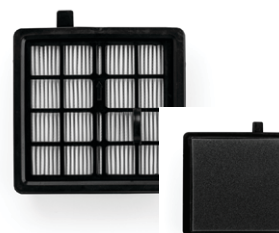
GIFT BOX HxWxD:
0x0x0 cm



Filters Set Hepa+Sponge Filter For MCV-80BS

Art. Number: 1008206

- Hepa and sponge filter for vacuum cleaner MUHLER MCV-80BS



Pcs / Ctn: 125
CARTON: 40x40x60 cm

GIFT BOX HxWxD:
0x0x0 cm



Turbo Brush For Upholstery And Pets For Vacuum Cleaners MVC-80BS, MVC-85BSL

Art. Number: 1008209

- Turbo brush for upholstery and pet hairs - for vacuum cleaners Muhler MVC-80BS and MVC-85BSL
- Effectively cleans furniture and carpets from hair and dust.



Pcs / Ctn: 42
CARTON: 70x50x30 cm

GIFT BOX HxWxD:
20x17x8.5 cm



Rechargeable Vacuum Cleaner MCC-155

Art. Number: 1006912

- Double filtration - cyclone system and HEPA filter with bagless design
- 2 speeds - Normal and Turbo
- Battery - 6 cells Li, 22.2 V, 2200 mAh
- Motor speed - 35000 rpm
- Suction power - 6500-10000 Pa
- Detachable dust bin with capacity - 500 ml
- Charging time - 4-4.5 hours
- Battery charging indicator
- Work duration at maximum power - about 20-25 minutes
- Work duration at minimum power - about 40-45 minutes
- The flexing tube makes cleaning hard-to-reach spots extremely easy
- Motorised floor brush with LED lighting
- Easy to maneuver when cleaning
- Flexible brush head for easy control
- Noise level - 75 dB (A)
- Accessories - adapter, wall mounting stand, 2in1 crevice and furniture brush
- 110W, 220-240V / 50-60 Hz



Pcs / Ctn: 4
CARTON: 46x38.5x57.5 cm

GIFT BOX HxWxD:
43.5x18.5x27.5 cm



2in1 Stick Vacuum Cleaner MVS-600

Art. Number: 1004912

- Ergonomic tube with handle for upright usage
- Detachable main body for using as hand vacuum cleaner
- On/Off power button
- Dust tank capacity 0.6 L - easy to open and clean
- Bagless operation
- Hepa filter
- Lightweight design
- Power cord length - 4 m
- Floor brush with wheels
- Accessories - upholstery brush, crevice nozzle
- 600W, 220-240 V / 50-60 Hz



Pcs / Ctn: 6
CARTON: 52x38x39 cm

GIFT BOX HxWxD:
50x18x12.5 cm



HEPA Filter For Vacuum Cleaner MVS-600 HF1

Art. Number: 1005215

- HEPA filter for vacuum cleaner Muhler MVS-600
- Clean the filter with a brush before reusing
- Wash the filter under running water periodically
- Put it back only when it is well dried
- Replace regularly after several washes, depending on the frequency of use of the vacuum cleaner
- Material - PP + PET

Pcs / Ctn: 120
CARTON: 39.5x38x52 cm

GIFT BOX HxWxD:
12x8x4 cm



2in1 Stick Vacuum Cleaner MVS-605

Art. Number: 1004913

- Ergonomic tube with handle for upright usage
- Detachable main body for using as hand vacuum cleaner
- On/Off power button
- Dust tank capacity 0.9 L - easy to open and clean
- Bagless operation
- Hepa filter
- Lightweight design
- Power cord length - 4 m
- Floor brush with wheels
- Accessories - upholstery brush, crevice nozzle
- 600W, 220-240 V / 50-60 Hz



Pcs / Ctn: 4
CARTON: 63.5x31x27 cm

GIFT BOX HxWxD:
61.5x14x12 cm



HEPA Filter For Vacuum Cleaner MVS-605 HF2

Art. Number: 1005216

- HEPA filter for vacuum cleaner Muhler MVS-605
- Clean the filter with a brush before reusing
- Wash the filter under running water periodically
- Put it back only when it is well dried
- Replace regularly after several washes, depending on the frequency of use of the vacuum cleaner
- Material - PP + PET

Pcs / Ctn: 90
CARTON: 39.5x38x52 cm

GIFT BOX HxWxD:
12x8x4 cm



Glass Digital Bathroom Scale MSC-3077

Art. Number: 1001316

- Capacity - 180 kg /396 lbs
- Division - 100 g
- Auto On/Off function
- Low battery and Overload indicator
- LCD size - 49x31 mm
- Product size - 270x270 mm
- Tempered glass platform - 5mm
- Power: 1x3V CR2032 (included)

Pcs / Ctn: 8
CARTON: 32x27x31 cm

GIFT BOX HxWxD:
29x3x29.5 cm



Glass Digital Bathroom Scale MSC-3077

Art. Number: 1001317

- Capacity - 180 kg /396 lbs
- Division - 100 g
- Auto On/Off function
- Low battery and Overload indicator
- LCD size - 49x31 mm
- Product size - 270x270 mm
- Tempered glass platform - 5mm
- Power: 1x3V CR2032 (included)

Pcs / Ctn: 8
CARTON: 32x27x31 cm

GIFT BOX HxWxD:
28x3x28.5 cm



Glass Digital Bathroom Scale MSC-3077

Art. Number: 1003176

- Capacity - 180 kg / 396 lbs
- Division - 100 g
- Auto On/Off function
- Low battery and Overload indicator
- LCD size - 49x31 mm
- Product size - 270x270 mm
- Tempered glass platform - 5mm
- Power: 1x3V CR2032 (included)



Pcs / Ctn: 8
CARTON: 32x27X31 cm

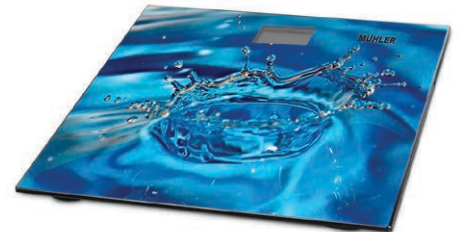
GIFT BOX HxWxD:
29x3x29.5 cm



Glass Digital Bathroom Scale MSC-3077

Art. Number: 1003175

- Capacity - 180 kg / 396 lbs
- Division - 100 g
- Auto On/Off function
- Low battery and Overload indicator
- LCD size - 49x31 mm
- Product size - 270x270 mm
- Tempered glass platform - 5mm
- Power: 1x3V CR2032 (included)



Pcs / Ctn: 8
CARTON: 32x27X31 cm

GIFT BOX HxWxD:
29x3x29.5 cm



Glass Digital Bathroom Scale MSC-3033

Art. Number: 1008558

- Capacity - 180 kg / 396 lbs
- Division - 100 g
- Auto On/Off function
- Low battery and Overload indicator
- Units- kg / st / lb
- LCD size - 72x29 mm
- Product size - 280x280 mm
- Tempered glass platform - 5mm
- Measure weight, body fat, hydration and muscle
- 12 users memory
- Power: 2xAAA battery (included)



Pcs / Ctn: 6
CARTON: 32x31X19.5 cm

GIFT BOX HxWxD:
28.4x28.4x2.5 cm



Glass Digital Bathroom Scale MSC-3033

Art. Number: 1008557

- Capacity - 180 kg / 396 lbs
- Division - 100 g
- Auto On/Off function
- Low battery and Overload indicator
- Units- kg / st / lb
- LCD size - 72x29 mm
- Product size - 280x280 mm
- Tempered glass platform - 5mm
- Measure weight, body fat, hydration and muscle
- 12 users memory
- Power: 2xAAA battery (included)



Pcs / Ctn: 6
CARTON: 31x32X19.5 cm

GIFT BOX HxWxD:
28.4x28.4x2.5 cm



Steam Iron SI-2730C

Art. Number: 1009168

- Ceramic-coated ironing plate
- Dry ironing, spray ironing, steam ironing, steam boost
- Self-cleaning
- Light indicator
- Wide water filling opening with safety cap
- Thermoregulator for selecting ironing temperature for different fabrics
- Anti-calc and anti-drip functions
- Water tank capacity: 300±10 g
- Ironing plate dimensions: 249x125 mm
- Cable length: visible part 1.95 m / total length 2.1 m
- 2600W, 220-240V / 50-60 Hz



NEW

Pcs / Ctn: 8
CARTON: 32.1x54.6x35 cm

GIFT BOX HxWxD:
33.7x13.2x15.2 cm



Steam Iron SI-2520C

Art. Number: 1009167

- Ceramic-coated ironing plate
- Dry ironing, spray ironing, steam ironing, steam boost
- Light indicator
- Wide water filling opening with safety cap
- Thermoregulator for selecting ironing temperature for different fabrics
- Anti-calc and anti-drip functions
- Water tank capacity: 350±10 g
- Ironing plate dimensions: 214x114 mm
- Cable length: visible part 1.65 m / total length 1.8 m
- 2400W, 220-240V / 50-60 Hz



NEW

Pcs / Ctn: 12
CARTON: 31.9x61X31.2 cm

GIFT BOX HxWxD:
29.9x11.8x15.1 cm



Steam Iron SI-1910N

Art. Number: 1009166

- Non-stick and easy-to-clean ironing plate
- Dry ironing, spray ironing, steam ironing, steam boost
- Light indicator
- Wide water filling opening with a safety cap
- Thermoregulator for selecting ironing temperature for different fabrics
- Water tank capacity: 230±10 g
- Ironing plate dimensions: 201x112 mm
- Cable length: visible part 1.55 m / total length 1.7 m
- 1600W, 220-240V / 50-60 Hz



NEW

Pcs / Ctn: 12
CARTON: 28.3x60x29 cm

GIFT BOX HxWxD:
27.7x11.6x13.3 cm



Hair Clipper MCL-05P

Art. Number: 1009294

- Cordless hair clipper
- Ergonomic design
- On/Off button
- Removable blade for easy cleaning
- Stainless steel blades
- Protective blade cover
- Quiet operation with less vibration
- Trimming height adjustment – 3 / 6 / 9 / 12 mm
- Accessories - trimmer attachment, lubricating oil, brush
- Type C USB charging cable
- 5W, 220-240V / 50-60 Hz

NEW



Pcs / Ctn: 20
CARTON: 47x25X38 cm

GIFT BOX HxWxD:
22.7x11.7x7 cm



HAir And Body Trimmer MCL-03P

Art. Number: 1009295

- Hair and body trimmer
- Ergonomic design
- On/Off button
- Removable blade for easy cleaning
- Protective blade cover
- Trimming height adjustment – 3 / 6 / 9 / 12 mm
- Accessories - lubricating oil, cleaning brush
- Type C USB charging cable
- 5W, 220-240V / 50-60 Hz

NEW



Pcs / Ctn: 40
CARTON: 51.5x41.5X28 cm

GIFT BOX HxWxD:
20x9.6x6.5 cm



Hair Straightener With Guide Comb MHS-777

Art. Number: 1009206

- Hair straightener
- Guide comb for easy hair arrangement while working
- Maximum working temperature - 230°C
- Digital temperature display
- Four plates for perfectly straight hair
- Ceramic coating for elegant and smooth styling
- 360 degree cable rotation for easy, twist-free operation
- 65W, 220-240V / 50-60 Hz

NEW



Pcs / Ctn: 24
CARTON: 31.5x34.5X37.5 cm

GIFT BOX HxWxD:
32x4.8x8.2 cm



HAir Curler 4in1 MHS-999

Art. Number: 1009207

- Hair curler for forming perfect curls
- Adjustable curling cylinder diameter: 18 / 22 / 28 / 32 mm
- 4 degrees of temperature - 160°C, 180°C, 200°C, 210°C
- LED light indicators for each selected temperature
- Automatic shutdown of the device after 1 hour
- Lock function during operation
- Grip-Tech ceramic coating to reduce the harmful effects of high temperature
- 360 degree cable rotation for easy, twist-free operation
- 100W, 220-240V / 50-60 Hz

NEW



Pcs / Ctn: 20
CARTON: 36.5x29X44.5 cm

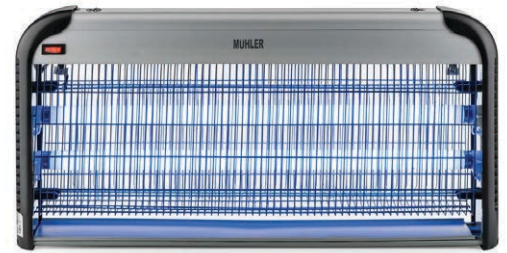
GIFT BOX HxWxD:
35.5x10.5x5.5 cm



Bug Zapper MIK-100

Art. Number: 1003954

- Effective coverage - 100 m²
- UVA bulb with a very long life span up to 8000 hours
- High-voltage grid - 1800-2000 V
- Freestanding with hanging option
- Removable tray for quick cleaning
- Indoor use
- Safe for humans and pets
- Effective against all flying bugs
- Easy and noise-free operation
- Metal hanging chain
- Device dimensions: 660x100x315 mm
- 36W, 220-240 V / 50-60 Hz



Pcs / Ctn: 4
CARTON: 33x41.5x67.5 cm

GIFT BOX HxWxD:
31x66x10 cm



Bug Zapper MIK-60

Art. Number: 1003953

- Effective coverage - 60 m²
- UVA bulb with a very long life span up to 8000 hours
- High-voltage grid - 1800-2000 V
- Freestanding with hanging option
- Removable tray for quick cleaning
- Indoor use
- Safe for humans and pets
- Effective against all flying bugs
- Easy and noise-free operation
- Metal hanging ring
- Device dimensions: 415x100x315 mm
- 30W, 220-240 V / 50-60 Hz



Pcs / Ctn: 6
CARTON: 33x43x61.5 cm

GIFT BOX HxWxD:
31x41.3x10 cm



Bug Zapper MIK-50F

Art. Number: 1005376

- Effective coverage - 60 m²
- UVA bulb with a very long life span up to 8000 hours
- Fan for greater efficiency in attracting insects
- Freestanding with wall mount option
- Removable tray for quick cleaning
- Indoor and outdoor utilization
- Safe for humans and pets
- Effective against all flying bugs
- Easy and noise-free operation
- Metal hanging ring
- Device dimensions: 255x255x255 mm
- 13W, 220-240 V / 50-60 Hz



Pcs / Ctn: 6
CARTON: 81x28x55 cm

GIFT BOX HxWxD:
26.5x26.5x26.5 cm



Bug Zapper MIK-30

Art. Number: 1003955

- Effective coverage - 20 m²
- UVA bulb with a very long life span up to 8000 hours
- High-voltage grid - 800-1000 V
- Freestanding or hanging option
- Removable tray for quick cleaning
- Indoor use
- Safe for humans and pets
- Effective against all flying bugs
- Easy and noise-free operation
- Metal hanging ring
- Device dimensions: 110x110x245 mm
- 4W, 220-240 V / 50-60 Hz



Pcs / Ctn: 20
CARTON: 27x50x62 cm

GIFT BOX HxWxD:
25.3x12x12 cm



Air Humidifier MHD-676

Art. Number: 1008243

- Suitable for premises up to 25 m²
- Water tank capacity - 2.6 L
- Adjustable steam level
- Working time - 7-12 h
- Noise level ≤ 35 dB
- Ultrasonic cool mist
- Colourful LED light
- Empty tank automatic switch-off
- Light indicator
- 25W, 220-240V / 50-60 Hz

Pcs / Ctn: 6
CARTON: 41x61.5x26.5 cm

GIFT BOX HxWxD:
25x20x20 cm



16" Stand Fan FM-4041

Art. Number: 90300105

- 3 speed control
- Mesh grille (1.4 mm)
- 3 PP blades - 105 g
- Oscillation function
- Max height - 1.30 m
- 60 cm cross base
- 40W, 220-240 V / 50-60 Hz

Pcs / Ctn: 1
CARTON: 43.5x13.5x45.5 cm

GIFT BOX HxWxD:
46x14x43 cm



16" Stand Fan FM-4040

Art. Number: 90300104

- 3 speed control
- Mesh grille (1.4 mm)
- 3 PP blades - 105 g
- Oscillation function
- Max height - 1.30 m
- 60 cm cross base
- 40W, 220-240 V / 50-60 Hz

Pcs / Ctn: 1
CARTON: 46x14x44 cm

GIFT BOX HxWxD:
46x14x43 cm



16" Stand Fan FM-5070

Art. Number: 90300102

- 3 speed control
- Mesh grille (1.4 mm)
- 3 PP blades - 105 g
- Oscillation function
- Max height - 1.30 m
- 60 cm cross base
- 40W, 220-240 V / 50-60 Hz

Pcs / Ctn: 1
CARTON: 45.5x13.5x43.5 cm

GIFT BOX HxWxD:
43x13x46 cm



16" Stand Fan FM-1650

Art. Number: 1005346

- 3 speed control
- Mesh grille
- 3 ox horn type blades
- Oscillation function
- Heavy round base
- 40W, 220-240 V / 50-60 Hz

Pcs / Ctn: 1
CARTON: 53x12X46 cm

GIFT BOX HxWxD:
53x13x48 cm



18" Metal Stand Fan DMF-18I

Art. Number: 1005317

- 3 speed control
- 4 metal blades
- Mesh grille
- Solid construction for high performance and durability
- Classical and elegant
- Height adjustable up to 1.18 m
- Oscillation function
- Low noise - 68 dB
- Round base
- 80W, 220-240 V / 50-60 Hz

Pcs / Ctn: 1
CARTON: 51x17X65 cm

GIFT BOX HxWxD:
64x16x50 cm



16" Industrial Stand Fan FM-6116D

Art. Number: 651069

- 135-pin chrome-plated radiating grille
- 3 speeds
- 3 metal blades
- Oscillation function
- Height - 130 cm
- Heavy round base
- 50W, 220-240 V / 50-60 Hz

Pcs / Ctn: 1
CARTON: 45x14X55 cm

GIFT BOX HxWxD:
45x14x55 cm



16" Industrial Stand Fan 3in1 FM-6136D

Art. Number: 651071

- 3in1 - stand, floor or wall montage
- 3 speed control
- 3 metal blades
- Chromed radial grille
- Oscillation function
- Round base
- 50W, 220-240 V / 50-60 Hz

Pcs / Ctn: 1
CARTON: 55x14.5X45 cm

GIFT BOX HxWxD:
43x17x46 cm



18" Industrial Stand Fan FM-8118D

Art. Number: 648883

- 3 speed control
- 3 metal blades
- Chromed radial grille
- Oscillation function
- Round base
- 70W, 220-240 V / 50-60 Hz

Pcs / Ctn: 1
CARTON: 52x16x63 cm

GIFT BOX HxWxD:
50x16x62 cm



18" Industrial Stand Fan FM-8138D

Art. Number: 651068

- 3in1 - stand, floor or wall montage
- 3 speed control
- 3 metal blades
- Chromed radial grille
- Oscillation function
- Round base
- 70W, 220-240 V / 50-60 Hz

Pcs / Ctn: 1
CARTON: 52x16x63 cm

GIFT BOX HxWxD:
50x16x63 cm



18" Industrial Stand Fan 3in1 FM-8140D

Art. Number: 1006620

- 3in1 - stand, floor or wall montage
- 3 speed control
- 3 metal blades
- Chromed radial grille
- Oscillation function
- Round base
- 70W, 220-240 V / 50-60 Hz

Pcs / Ctn: 1
CARTON: 62x52x16 cm

GIFT BOX HxWxD:
62x52x16 cm



12" Floor Box Fan SMX-1240

Art. Number: 651469

- 3 speed control
- 5 blades
- Wave grille
- On/Off button
- Oscillation function
- Timer - 60 min
- Tip-over protection switch
- Power cord length - 1.5 m
- 35W, 220-240 V / 50-60 Hz

Pcs / Ctn: 1
CARTON: 43x15x38 cm

GIFT BOX HxWxD:
37x13.5x42 cm



9" Desk Fan FM-9

Art. Number: 1003839

- 2 speed control
- Mesh grille
- 3 PP blades
- Oscillation function
- Round base
- 20W, 220-240 V / 50-60 Hz

Pcs / Ctn: 6
CARTON: 37x49X63 cm

GIFT BOX HxWxD:
22.5x19.5x33 cm



12" Desk Fan FM-12

Art. Number: 1003840

- 3 speed control
- Mesh grille
- 3 PP blades
- Oscillation function
- Round base
- 30W, 220-240 V / 50-60 Hz

Pcs / Ctn: 1
CARTON: 40x34X22 cm

GIFT BOX HxWxD:
35x17.5x38 cm



16" Desk Fan FM-16

Art. Number: 1003841

- 3 speed control
- Mesh grille
- 3 PP blades
- Oscillation function
- Round base
- 40W, 220-240 V / 50-60 Hz

Pcs / Ctn: 1
CARTON: 45x19X43 cm

GIFT BOX HxWxD:
43x18.5x43 cm



14" Industrial Floor Fan FM-1413

Art. Number: 1005312

- 3 speed control
- 3 blades
- Spider grille
- Floor stand
- Handle for easy movement
- Pitching function
- Low noise: 55 dB
- 60W, 220-240 V / 50-60 Hz

Pcs / Ctn: 1
CARTON: 48x20.5X46 cm

GIFT BOX HxWxD:
48x20.5x46 cm



16" Industrial Floor Fan FM-1613

Art. Number: 1005313

- 3 speed control
- 3 blades
- Spider grille
- Floor stand
- Handle for easy movement
- Pitching function
- Low noise - 60 dB
- 90W, 220-240 V / 50-60 Hz

Pcs / Ctn: 1
CARTON: 47x20x48 cm

GIFT BOX HxWxD:
47x19x47 cm



18" Industrial Floor Fan FM-1813

Art. Number: 1005314

- 3 speed control
- 3 blades
- Spider grille
- Floor stand
- Handle for easy movement
- Vertical air jet adjustment
- Low noise - 63 dB
- Powerful motor
- 100W, 220-240 V / 50-60 Hz

Pcs / Ctn: 1
CARTON: 54x19x52.5 cm

GIFT BOX HxWxD:
54x19x52.5 cm



20" Industrial Floor Fan FM-2013

Art. Number: 1005315

- 3 speed control
- 3 blades
- Spider grille
- Floor stand
- Handle for easy movement
- Vertical air jet adjustment
- Low noise - 65 dB
- Powerful motor
- 120W, 220-240 V / 50-60 Hz

Pcs / Ctn: 1
CARTON: 57x20x60 cm

GIFT BOX HxWxD:
58.5x19x56.5 cm



20" Industrial Floor Box Fan FM-2020F

Art. Number: 1001775

- 3 speed control
- 5 curved blades
- Wave grille
- Powerful motor
- Handle for easy movement
- Vertical air flow adjustment
- 80W, 220-240 V / 50-60 Hz

Pcs / Ctn: 1
CARTON: 58x17x58.5 cm

GIFT BOX HxWxD:
58x58x16 cm



16" Mist Fan MF-1677

Art. Number: 651675

- Tilt and Oscillation function
- Mesh grille guard
- Timer - 60 min
- 3 stages adjustable mist volume
- 3 speed settings - Low, Medium, High
- Transparent water tank volume - 3.2 L
- Cooling mist up to 8 hours
- Humidifier automatically turns off when water tank is empty
- Humidifier and fan combined or independent functions
- Pleasant humidification, cooling and dust removal from the air
- Stable heavy round base
- 75W, 220-240 V / 50-60 Hz

Pcs / Ctn: 1
CARTON: 60x26X46 cm

GIFT BOX HxWxD:
60x25x46 cm



16" Mist Fan MF-1609RC

Art. Number: 1005304

- 3 stages adjustable mist volume
- Tilt and Oscillation function
- Mesh grille guard
- Timer settings - 30 min up to 7 h 30 min
- 3 speed settings - Low, Medium, High
- 3 Breeze modes - Natural, Normal, Sleep
- Transparent water tank volume - 3.2 L
- Cooling mist up to 8 hours
- Humidifier automatically turns off when water tank is empty
- Remote control (5m operating range)
- Humidifier and fan combined or independent functions
- Pleasant humidification, cooling and dust removal from the air
- Stable heavy round base
- 75W, 220-240 V / 50-60 Hz

Pcs / Ctn: 1
CARTON: 60x44X26.8 cm

GIFT BOX HxWxD:
60x44x26.8 cm



30" Industrial Mist Fan MF-3044

Art. Number: 1002520

- 30" industrial mist fan
- Water tank volume - 40 L
- 3 fan speeds
- Oscillating function
- Adjustable mist up to 4 L/h
- 230W, 230V / 50Hz

Pcs / Ctn: 0.34
CARTON: 120x12X13.5 cm

GIFT BOX HxWxD:
0x0x0 cm



26" Industrial Wall Fan MFI-2616

Art. Number: 1006348

- High velocity fan
- Powerful motor
- 3 aluminum powder coated blades
- 3 speed control
- On/Off button
- Spiral 26-pin protective grille
- Adjustable 35-degree vertical oscillation
- Adjustable 60-degree wide-angle oscillation function
- Wall mount only
- Mounting kit included
- 160W, 220-240 V / 50-60 Hz

Pcs / Ctn: 0.5
CARTON: 21.5x27X26 cm

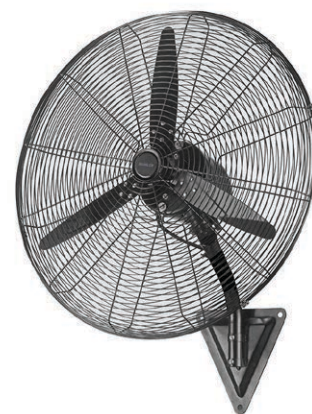
GIFT BOX HxWxD:
0x0x0 cm



30" Industrial Wall Fan MFI-3020

Art. Number: 1006349

- High velocity fan
- Powerful motor
- 3 aluminum powder coated blades
- 3 speed control
- On/Off button
- Spiral 26-pin protective grille
- Adjustable 35-degree vertical oscillation
- Adjustable 60-degree wide-angle oscillation function
- Wall mount only
- Mounting kit included
- 200W, 220-240 V / 50-60 Hz



Pcs / Ctn: 0.5
CARTON: 21.5x27X26 cm

GIFT BOX HxWxD:
0x0x0 cm



42" Ceiling Fan MCF-4044

Art. Number: 1005456

- Blades diameter - 107 cm
- 3 speeds
- 4 blades
- Pull chain control
- Bulbs - 1 x 60W
- Bulb type - E27
- Material - MDF
- Reverse rotation - Yes
- 55W, 220-240 V / 50-60 Hz



Pcs / Ctn: 1
CARTON: 27x25X40 cm

GIFT BOX HxWxD:
40x22x25 cm



48'' Metal Ceiling Fan MCD-4048

Art. Number: 1005458

- Blades diameter - 122 cm
- 3 metal blades
- 5 speeds
- Wall mounted speed regulator (included)
- 60W, 220-240 V / 50-60 Hz



Pcs / Ctn: 1
CARTON: 19x25X55 cm

GIFT BOX HxWxD:
18.5x55x24 cm



56'' Metal Ceiling Fan MCD-4056

Art. Number: 1005459

- Blades diameter - 142 cm
- 3 metal blades
- 5 speeds
- Wall mounted speed regulator (included)
- 60W, 220-240 V / 50-60 Hz



Pcs / Ctn: 1
CARTON: 19x25X64 cm

GIFT BOX HxWxD:
18.5x64x24 cm



42'' Ceiling Fan MCF-4261

Art. Number: 1005454

- Blades diameter - 107 cm
- 3 speed control
- 4 blades
- Pull chain control
- Bulbs - 1 x 60W
- Bulb type - E27
- Material - MDF
- Reverse rotation - Yes
- 60W, 220-240 V / 50-60 Hz



Pcs / Ctn: 1
CARTON: 22x20X42 cm

GIFT BOX HxWxD:
18x20x40 cm



42'' Ceiling Fan MCF-4262W N

Art. Number: 1005457

- Blades diameter - 107cm
- 3 speed
- 4 blades
- Pull chain control
- Bulbs - 3 x 60W
- Bulb type - E27
- Material - MDF
- Reverse rotation - Yes
- 55W, 220-240 V / 50-60 Hz



Pcs / Ctn: 1
CARTON: 25x26X42 cm

GIFT BOX HxWxD:
40.5x25x24 cm



Mobile Cooler 3in1 MC-4014

Art. Number: 1008654

- Cooling function
- Humidifying function
- Dust air purification
- 3-position speed adjustment
- Water tank - 4 L
- 2 pcs of ice pack - included
- Auto wide angle swing
- Low noise ≤65 dB
- 65W, 230-240 V / 50-60 Hz

Pcs / Ctn: 1
CARTON: 31x28x58 cm

GIFT BOX HxWxD:
57x30.5x27.5 cm



Bladeless Mobile Cooler MC-4000

Art. Number: 1008656

- Cooling function
- Humidifying function
- Dust air purification
- 3-position speed adjustment
- Water tank - 4 L
- Easily fill water from top or bottom
- 2 pcs of ice pack - included
- Touch control panel
- LED functions indicator
- Timer - 12 h
- Remote control
- Auto wide angle swing
- Low noise ≤65 dB
- 65W, 220-240 V / 50-60 Hz

Pcs / Ctn: 1
CARTON: 90x35x25 cm

GIFT BOX HxWxD:
88.9x34.5x24 cm



Mobile Air Cooler MC-4024

Art. Number: 1008655

- Cooling function
- Humidifying function
- Dust air purification
- 3-position speed adjustment
- Water tank - 4 L
- 2 pcs of ice pack - included
- Auto wide angle swing
- Touch control panel
- Timer - 12 h
- Remote control
- Low noise ≤65 dB
- 65W, 220-240 V / 50-60 Hz

Pcs / Ctn: 1
CARTON: 58x31x28 cm

GIFT BOX HxWxD:
57x30.5x27.5 cm



Mobile Cooler MC-5050

Art. Number: 1005322

- Cooling function
- Humidifying function
- Dust air purification
- 3-position fan speed adjustment
- Water tank - 4 L
- 2 pcs of ice pack - included
- Low noise ≤65 dB
- 65W, 220-240 V / 50-60 Hz

Pcs / Ctn: 1
CARTON: 60x25x28 cm

GIFT BOX HxWxD:
61.5x29x28.5 cm



Mobile Air Cooler MC-5055RC

Art. Number: 1005323

- Cooling function
- Humidifying function
- Dust air purification
- 3-position speed adjustment - Low, Medium, High
- 3 Breeze modes - Natural, Normal, Sleep
- Timer - 12 h
- Touch control panel
- Remote control
- Auto wide angle swing
- Product stand for free oscillation function
- Water tank - 4 L
- 2 pcs of ice pack - included
- Low noise ≤65 dB
- Unit size: 260x255x590 mm
- 65W, 220-240 V / 50-60 Hz

Pcs / Ctn: 1
CARTON: 64x29x29 cm

GIFT BOX HxWxD:
61.5x29x28.5 cm



Mobile Air Cooler And Heater MC-6066H

Art. Number:

- 3 cooling settings
- 2 heat settings - 1000W / 2000W
- Humidifier - 0.5 L / hour
- Oscillation function
- Cooling and humidifying through special net installed on the back of the product filter
- Water level indicator
- Wheels and handle for easy movement
- LED display
- Timer - 12 h
- Remote control
- Water tank - 6 L
- 2 pcs of ice pack - included
- Unit size: 60.4x27.2x31 cm
- Heating - 2000W, 220-240 V / 50-60 Hz
- Cooling - 65W, 220-240 V / 50-60 Hz



Pcs / Ctn: 1
CARTON: 65x33x35 cm

GIFT BOX HxWxD:
65x32x35 cm



Portable Mini Cooler MC-585

Art. Number: 1005698

- Cooling function
- Humidifying function
- Dust air purification
- 3-position speed adjustment
- 380 ml water tank providing cool breeze up to 12 hours
- LED night light
- USB adaptor
- Power supply: DC5V, 1.5A - Micro USB

Pcs / Ctn: 24
CARTON: 63.5x54.5x36.5 cm

GIFT BOX HxWxD:
17.5x15.5x17 cm



Portable Air Conditioner MPAC12-C

Art. Number: 1009290

- Cooling capacity – 7000 BTU
- Cooling power – 780 W
- Noise level: 65 dB (A)
- Operating with R290 gas
- Energy efficiency ratio (EER) – 2.6
- Dehumidifier function
- Dehumidifier capacity – 15 l/day
- Full tank indicator
- Air flow rate – 290 m³/h
- Recommended coverage area – 8-12 m²
- Powerful fan with 2 speed settings
- Splash protection IPX1
- LED display
- Remote control
- Timer – 24 h
- Sleep function
- Wheels for easy movement
- Accessories: Duct vent, duct connection, window adapter
- 780W, 220-240V/ 50-60 Hz

Pcs / Ctn: 1
CARTON: 0x0X0 cm

GIFT BOX HxWxD:
87.7x47.5x38 cm



3 800173 801131



NEW

Portable Air Conditioner MPAC12-CH-WIFI

Art. Number: 1009291

- Cooling Capacity: 12000 BTU
- Cooling Power: 1330 W
- Heating Power: 1130 W
- Noise Level: ø65 dB(A)
- Energy Efficiency Ratio (EER): 2.63
- Dehumidifier function
- Dehumidification Capacity: 28.8 L/day
- Full tank indicator
- Air flow rate: 390 m³/h
- Recommended Coverage Area: 18-25 m²
- Powerful fan with 3 speed settings
- Splash protection IPX1
- Wi-Fi
- LED display
- Remote control
- Timer 24h
- Sleep function
- Wheels for easy movement
- Accessories: Duct vent, duct connection, window adapter
- 220-240V / 50Hz

Pcs / Ctn: 1
CARTON: 0x0X0 cm

GIFT BOX HxWxD:
87.7x47.5x38 cm



3 800173 801148



NEW

Portable Air Conditioner MPAC70-C

Art. Number: 1009288

- Cooling capacity – 7000 BTU
- Cooling power – 780 W
- Noise level: 65 dB (A)
- Operating with R290 gas
- Energy efficiency ratio (EER) – 2.6
- Dehumidifier function
- Dehumidifier capacity – 15 l/day
- Full tank indicator
- Air flow rate – 290 m³/h
- Recommended coverage area – 8-12 m²
- Powerful fan with 2 speed settings
- Splash protection IPX1
- LED display
- Remote control
- Timer – 24 h
- Sleep function
- Wheels for easy movement
- Accessories: Duct vent, duct connection, window adapter
- 780W, 220-240V/ 50-60 Hz

Pcs / Ctn: 1
CARTON: 0x0X0 cm

GIFT BOX HxWxD:
87.8x35.4x32.8 cm



3 800173 801117



NEW

Portable Air Conditioner MPAC90-C

Art. Number: 1009289

- Cooling capacity – 7000 BTU
- Cooling power – 780 W
- Noise level: 65 dB (A)
- Operating with R290 gas
- Energy efficiency ratio (EER) – 2.6
- Dehumidifier function
- Dehumidifier capacity – 15 l/day
- Full tank indicator
- Air flow rate – 290 m³/h
- Recommended coverage area – 8-12 m²
- Powerful fan with 2 speed settings
- Splash protection IPX1
- LED display
- Remote control
- Timer – 24 h
- Sleep function
- Wheels for easy movement
- Accessories: Duct vent, duct connection, window adapter
- 780W, 220-240V/ 50-60 Hz

Pcs / Ctn: 1
CARTON: 0x0X0 cm

GIFT BOX HxWxD:
87.8x35.4x32.8 cm



3 800173 801124

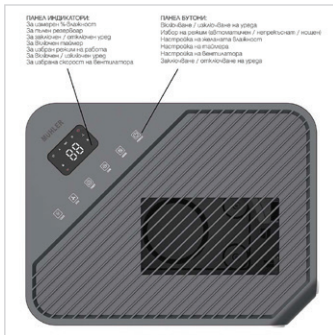


NEW

Dehumidifier MHD-2045DHI

Art. Number: 1008320

- High moisture absorption capacity of up to 20 L / 24 hours
- Tank capacity - 4.5 L
- LED display for humidity
Three colors indicating light: Ambient Humidity
≤ 45% - Blue light;
45-65% - Green light;
≥65% - Red light
- Coarse particles filter
- Full tank indicator
- Humidity setting: 30% to 80%
- Electronic control
- Child lock function
- 24-hour timer
- 2 stages of fan speed
- Sleep mode
- Noise level: ≤43 dB
- High energy efficiency
- Permanent drainage
- Refrigerant R290 / 54 g
- Automatic defrosting at low temperatures
- Laundry drying function
- Air circulation 180 m3/h
- Automatic shut-off and restart
- Applicable area: 20-30 m2
- 330W, 220-240V / 50-60 Hz



Pcs / Ctn: 1
CARTON: 54x35x28 cm

GIFT BOX HxWxD:
53.5x34.7x27.7 cm



Dehumidifier MHD-10T25

Art. Number: 1009085

- Capacity: 10 L / 24 hours (30°C 80%); 5 L / 24 hours (27°C 80%)
- Tank capacity - 1.8 L
- LED display for humidity
- Air filter
- Carbon filter
- Ionizer
- Full tank indicator
- Operating temperature: 5°C - 35°C
- Humidity setting: 20% to 90%
- Child lock function
- 24-hour timer
- Noise level: <42 dB
- Refrigerant: R290/40 g
- Defrosting Memory
- Operating modes: Clothes drying, Automatic mode, Manual mode
- Air circulation: 130 m3/h
- Automatic shut-off when the tank is full
- Built-in handle
- Wheels for easy movement
- 80 cm Ø10 pipe for direct drainage
- Applicable area: 25-45 m2
- 220-240V/ 50-60 Hz
- Rated power at 27°C - 60%: 185W
- Maximum power at 35°C - 90%: 240W

NEW



Pcs / Ctn: 1
CARTON: 54x35x28 cm

GIFT BOX HxWxD:
51x33x25 cm



5-way Portable Multiple Socket Outlet

Art. Number: 1006181

- Portable multiple socket outlets with 5-way shuttered outlets
- 2-pole disconnection switch
- Cable: H05VV-F, 3Gx1.5 mm², 1.4 m
- Rating: 16 A, 250 V, Max. 3680W, 230 V, 50 Hz, IP20
- With child protection



Pcs / Ctn: 24
CARTON: 32x31x46 cm

GIFT BOX HxWxD:
0x0x0 cm



3-way Portable Multiple Socket Outlet

Art. Number: 1006173

- Portable multiple socket outlets with 3-way shuttered outlets
- Cable: H05VV-F, 3Gx1.5 mm², 1.5 m
- Rating 16 A, 230 V, Max. 3680W, IP20
- Sockets at an angle of 45 degrees
- With child protection



Pcs / Ctn: 20
CARTON: 17x26x43 cm

GIFT BOX HxWxD:
4x16x4.7 cm



4-way Portable Multiple Socket Outlet

Art. Number: 1006174

- Portable multiple socket outlets with 4-way shuttered outlets
- Cable: H05VV-F, 3Gx1.5 mm², 1.5 m
- Rating 16 A, 230 V, Max. 3680W, IP20
- Sockets at an angle of 45 degrees
- With child protection



Pcs / Ctn: 20
CARTON: 17x27x43 cm

GIFT BOX HxWxD:
4x20.5x4.7 cm



5-way Portable Multiple Socket Outlet

Art. Number: 1006175

- Portable multiple socket outlets with 5-way shuttered outlets
- Cable: H05VV-F, 3Gx1.5 mm², 1.5 m
- Rating 16 A, 230 V, Max. 3680W, IP20
- Sockets at an angle of 45 degrees
- With child protection



Pcs / Ctn: 20
CARTON: 17x32x43 cm

GIFT BOX HxWxD:
4x24.7x4.7 cm



6-way Portable Multiple Socket Outlet

Art. Number: 1006176

- Portable multiple socket outlets with 6-way shuttered outlets
- Cable: H05VV-F, 3Gx1.5 mm², 1.5 m
- Rating 16 A, 230 V, Max. 3680W, IP20
- Sockets at an angle of 45 degrees
- With child protection



Pcs / Ctn: 20
CARTON: 17x34x43 cm

GIFT BOX HxWxD:
4x29x4.7 cm



3-way Portable Multiple Socket Outlet

Art. Number: 1006177

- Portable multiple socket outlets with 3-way shuttered outlets
- 2-pole disconnection switch
- Cable: H05VV-F, 3Gx1.5 mm², 1.5 m
- Rating 16 A, 230 V, Max. 3680W, IP20
- With child protection



Pcs / Ctn: 20
CARTON: 17x26x43 cm

GIFT BOX HxWxD:
0x0x0 cm



4-way Portable Multiple Socket Outlet With USB Ports

Art. Number: 1006183

- Portable multiple socket outlets with key, with 4-way shuttered outlets
- 2-pole disconnection switch
- 2-way USB ports type A + C
- Cable: H05VV-F, 3Gx1.5 mm², 1.5 m
- Rating: 16 A, 250 V, 50 Hz, IP20
- With child protection



Pcs / Ctn: 20
CARTON: 18x35x44 cm

GIFT BOX HxWxD:
0x0x0 cm



4-way Portable Multiple Socket Outlet

Art. Number: 1006178

- Portable multiple socket outlets with 4-way shuttered outlets
- 2-pole disconnection switch
- Cable: H05VV-F, 3Gx1.5 mm², 1.5 m
- Rating 16 A, 230 V, Max. 3680W, IP20
- With child protection



Pcs / Ctn: 20
CARTON: 18x28x43 cm

GIFT BOX HxWxD:
0x0x0 cm



5-way Portable Multiple Socket Outlet

Art. Number: 1006179

- Portable multiple socket outlets with 5-way shuttered outlets
- 2-pole disconnection switch
- Cable: H05VV-F, 3Gx1.5 mm², 1.5 m
- Rating 16 A, 230 V, Max. 3680W, IP20
- With child protection



Pcs / Ctn: 20
CARTON: 17x34x43 cm

GIFT BOX HxWxD:
0x0x0 cm



6-way Portable Multiple Socket Outlet

Art. Number: 1006180

- Portable multiple socket outlets with 6-way shuttered outlets
- 2-pole disconnection switch
- Cable: H05VV-F, 3Gx1.5 mm², 1.5 m
- Rating 16 A, 230 V, Max. 3680W, IP20
- With child protection



Pcs / Ctn: 20
CARTON: 17x36x43 cm

GIFT BOX HxWxD:
0x0x0 cm



3-way Portable Multiple Socket Outlet 3 m

Art. Number: 1007092

- Portable multiple socket outlets with 3-way shuttered outlets
- Cable: H05VV-F, 3Gx1.5 mm², 3 m
- Rating 16 A, 230 V, Max. 3680W, IP20
- With child protection

NEW



Pcs / Ctn: 20
CARTON: 0x0x0 cm

GIFT BOX HxWxD:
0x0x0 cm



4-way Portable Multiple Socket Outlet 3 m

Art. Number: 1008196

- Portable multiple socket outlets with 4-way shuttered outlets
- Cable: H05VV-F, 3Gx1.5 mm², 3 m
- Rating 16 A, 230 V, Max. 3680W, IP20
- With child protection

NEW



Pcs / Ctn: 20
CARTON: 0x0x0 cm

GIFT BOX HxWxD:
0x0x0 cm



5-way Portable Multiple Socket Outlet 3 m

Art. Number: 1009172

- Portable multiple socket outlets with 5-way shuttered outlets
- Cable: H05VV-F, 3Gx1.5 mm², 3 m
- Rating 16 A, 230 V, Max. 3680W, IP20
- With child protection

NEW



Pcs / Ctn: 20
CARTON: 0x0X0 cm

GIFT BOX HxWxD:
0x0x0 cm



3-way Portable Multiple Socket Outlet 5 m

Art. Number: 1007093

- Portable multiple socket outlets with 3-way shuttered outlets
- Cable: H05VV-F, 3Gx1.5 mm², 5 m
- Rating 16 A, 230 V, Max. 3680W, IP20
- With child protection

NEW



Pcs / Ctn: 20
CARTON: 0x0X0 cm

GIFT BOX HxWxD:
0x0x0 cm



5-way Portable Multiple Socket Outlet 5 m

Art. Number: 1009173

- Portable multiple socket outlets with 5-way shuttered outlets
- Cable: H05VV-F, 3Gx1.5 mm², 5 m
- Rating 16 A, 230 V, Max. 3680W, IP20
- With child protection

NEW



Pcs / Ctn: 20
CARTON: 0x0X0 cm

GIFT BOX HxWxD:
0x0x0 cm



3-way Portable Multiple Socket Outlet 3 m

Art. Number: 1008197

- Portable multiple socket outlets with 3-way shuttered outlets
- 2-pole disconnection switch
- Cable: H05VV-F, 3Gx1.5 mm², 3 m
- Rating 16 A, 230 V, Max. 3680W, IP21
- With child protection

NEW



Pcs / Ctn: 20
CARTON: 0x0X0 cm

GIFT BOX HxWxD:
0x0x0 cm



4-way Portable Multiple Socket Outlet 3 m

Art. Number: 1008199

- Portable multiple socket outlets with 4-way shuttered outlets
- 2-pole disconnection switch
- Cable: H05VV-F, 3Gx1.5 mm², 3 m
- Rating 16 A, 230 V, Max. 3680W, IP20
- With child protection

NEW



Pcs / Ctn: 20
CARTON: 0x0X0 cm

GIFT BOX HxWxD:
0x0x0 cm



5-way Portable Multiple Socket Outlet 3 m

Art. Number: 1009180

- Portable multiple socket outlets with 5-way shuttered outlets
- 2-disconnection switch
- Cable: H05VV-F, 3Gx1.5 mm², 3 m
- Rating 16 A, 230 V, Max. 3680W, IP20
- With child protection

NEW



Pcs / Ctn: 5
CARTON: 0x0X0 cm

GIFT BOX HxWxD:
0x0x0 cm



3-way Portable Multiple Socket Outlet 5 m

Art. Number: 1008198

- Portable multiple socket outlets with 3-way shuttered outlets
- 2-pole disconnection switch
- Cable: H05VV-F, 3Gx1.5 mm², 5 m
- Rating 16 A, 230 V, Max. 3680W, IP22
- With child protection

NEW



Pcs / Ctn: 20
CARTON: 0x0X0 cm

GIFT BOX HxWxD:
0x0x0 cm



4-way Portable Multiple Socket Outlet 5 m

Art. Number: 1009174

- Portable multiple socket outlets with 4-way shuttered outlets
- 2-pole disconnection switch
- Cable: H05VV-F, 3Gx1.5 mm², 5 m
- Rating 16 A, 230 V, Max. 3680W, IP20
- With child protection

NEW



Pcs / Ctn: 20
CARTON: 0x0X0 cm

GIFT BOX HxWxD:
0x0x0 cm



3-way Portable Multiple Socket Outlet With USB Ports

Art. Number: 1006118

- Portable multiple socket outlets with 3-way shuttered outlets
- 2-way USB ports type A + C
- 2-pole disconnection switch
- Cable: H05VV-F, 3Gx1.5 mm², 1.4 m
- Rating: 16 A, 250 V, Max. 3680W, 230 V, 50 Hz, IP20
- USB output: 5 V DC, 2.4 A, 12W
- With child protection



Pcs / Ctn: 24
CARTON: 32x31X46 cm

GIFT BOX HxWxD:
0x0x0 cm



3-way Portable Multiple Socket Outlet With USB Ports

Art. Number: 1006182

- Portable multiple socket outlets with key, with 3-way shuttered outlets
- 2-pole disconnection switch
- 2-way USB ports type A + C
- Cable: H05VV-F, 3Gx1.5 mm², 1.5 m
- Rating: 16 A, 250 V, 50 Hz, IP20
- With child protection



Pcs / Ctn: 24
CARTON: 31x32X32 cm

GIFT BOX HxWxD:
0x0x0 cm



4-way Portable Multiple Socket Outlet With USB Ports

Art. Number: 1009179

- Portable multiple socket outlets with key with 4-way shuttered outlets
- 2-pole disconnection switch
- 2-way USB ports type A + C
- 5 V DC, 3.4 A, 12W (Fast charge)
- Cable: H05VV-F, 3Gx1.5 mm², 1.5 m
- Rating: 16 A, 250 V, 50 Hz, IP20
- With child protection



Pcs / Ctn: 5
CARTON: 0x0X0 cm

GIFT BOX HxWxD:
0x0x0 cm



4-way Portable Multiple Socket Outlet With USB Ports

Art. Number: 1006119

- Portable multiple socket outlets with key
- Round with 4-way shuttered outlets and 2-way USB ports type A + C
- 2-pole disconnection switch
- Cable: H05VV-F, 3Gx1.5 mm², 1.4 m
- Rating: 16 A, 250 V, Max. 3680W, 230 V, 50 Hz, IP20
- USB output: 5 V DC, 2.4 A, 12W
- With child protection



Pcs / Ctn: 24
CARTON: 25x31X47 cm

GIFT BOX HxWxD:
0x0x0 cm



Cable Extension 5m

Art. Number: 1009176

- Cable extension 5 m
- Cable: H05VV-F, 3Gx1 mm²
- Rating 10 A, 250 V, Max. 2200W, IP20
- With child protection

NEW



Pcs / Ctn: 20
CARTON: 0x0X0 cm

GIFT BOX HxWxD:
0x0x0 cm



Cable Extension 10m

Art. Number: 1009177

- Cable extension 10 m
- Cable: H05VV-F, 3Gx1 mm²
- Rating 10 A, 250 V, Max. 2200W, IP21
- With child protection

NEW



Pcs / Ctn: 20
CARTON: 0x0X0 cm

GIFT BOX HxWxD:
0x0x0 cm



Cable Extension 20m

Art. Number: 1009178

- Cable extension 20 m
- Cable: H05VV-F, 3Gx1 mm²
- Rating 10 A, 250 V, Max. 2200W, IP22
- With child protection

NEW



Pcs / Ctn: 1
CARTON: 0x0X0 cm

GIFT BOX HxWxD:
0x0x0 cm



Cable Reel With 4 Sockets

Art. Number: 1006184

- Cable reel with 4 sockets I and thermal cut-out
- Cable: H05VV-F, 3Gx1.5 mm², 15 m
- Reeled: 1000W, 230 V, IP20
- Unreeled: 3200W, 230 V, IP20
- With child protection



Pcs / Ctn: 4
CARTON: 26x28X37 cm

GIFT BOX HxWxD:
0x0x0 cm



Cable Reel With 4 Sockets 30m

Art. Number: 1008202

- Cable reel with 4 sockets I and thermal cut-out
- Cable: H05VV-F, 3Gx1.5 mm², 30 m
- Reeled: 1000W, 230 V, IP20
- Unreeled: 3200W, 230 V, IP20
- With child protection

NEW



Pcs / Ctn: 2
CARTON: 0x0X0 cm

GIFT BOX HxWxD:
0x0x0 cm



Cable Reel With 4 Sockets 50m

Art. Number: 1009175

- Cable reel with 4 sockets I and thermal cut-out
- Cable: H05VV-F, 3Gx1.5 mm², 50 m
- Reeled: 1000W, 230 V, IP20
- Unreeled: 3200W, 230 V, IP20
- With child protection

NEW



Pcs / Ctn: 2
CARTON: 0x0X0 cm

GIFT BOX HxWxD:
0x0x0 cm



